

Appendix 8A.5

Winter Season VP Survey Results (October 2017 to March 2021)

Hen Harrier Observations

Hen Harrier Observations, Winter Season 2017/2018 Survey.

Observation	Date	Time	VP	On Site Observation Time (secs)	Off Site Observation Time (secs)	Activity	Habitat	Details
1	09.11.17	11.24 - 11.26	5	150	0	Foraging	Conifer Plantation, rough grassland	Male Hen Harrier hunting over young conifers and rough grassland. Flew south at 2-5m above ground level (AGL) and then flew over the forest at 25m AGL, and west out of view.
2	09.11.17	12.45 - 12.47	1 & 5	0	210	Flying	Conifer Plantation	Ringtail Hen Harrier mobbed by three crows. Flying at 25-100m AGL initially, dropped to 20m AGL.
3	09.11.17	13.18	1	4	0	Flying	Conifer Plantation	Adult male Hen Harrier flying just above treetops, 5-25m AGL.
4	09.11.17	13.33	1 & 4	23	161	Foraging	Conifer Plantation, rough grassland	Adult male Hen Harrier foraging, 0-5m AGL, then rose to 20m to clear forestry.
5	26.01.17	12.06 - 12.08	3	120	30	Flying	Conifer Plantation, Bog	Ringtail Hen Harrier (probably a young female) flew in from the east over forest at 8-10m AGL. Mobbed by two Ravens. The Harrier then flew low over the moor (1-2m AGL) as it ascended the hill and flushed two Snipe. It disappeared over the hill but

Observation	Date	Time	VP	On Site Observation Time (secs)	Off Site Observation Time (secs)	Activity	Habitat	Details
								was seen again flying along the eastern side of the peak to the southeast of Musheramore at 1-2m AGL.
6	21.02.18	13.16	3	4	0	Foraging	Conifer Plantation	Male Hen Harrier came briefly into view over immature conifer plantation to the north of VP3. Flying over conifers at 0-5m AGL. Lost from sight heading north.
7	26.02.18	11.17	5	15	0	Flying	Improved Agricultural Grassland	Adult male Hen Harrier briefly seen, flying quickly over improved agricultural grassland < 25m AGL.
8	26.02.18	11.33 - 11.37	5 & 6	120	120	Flying	Improved Agricultural Grassland, Scrub	Adult male Hen Harrier seen again (probably same bird as Observation 6). Flying quickly improved agricultural grassland, and scrub. Flew around disused house and farmyard at 10m AGL and dropped to 3-5m AGL as it left the site and continued down into valley and over another area of scrub before disappearing out of view.
9	16.03.18	10.11	4	15	0	Foraging	Bog	Brief sighting of ringtail Hen Harrier flying low <5m AGL.

Observation	Date	Time	VP	On Site Observation Time (secs)	Off Site Observation Time (secs)	Activity	Habitat	Details
								Probably foraging. Lost from view due to topography.
10	16.03.18	11.06	3	5	5	Flying	Conifer Plantation, Bog	Male Hen Harrier flew over forest and then over moor at 1-2m AGL. Veered south and flew over hill out of view.
11	22.03.18	12.55	6	0	180	Flying, carrying prey	Bog, Conifer Plantation	Male Hen Harrier carrying food in talons, being mobbed by a Raven (but out-maneuvred it). Continued south with prey flying c. 25-100m AGL.

Hen Harrier Observations, Winter Season 2018/2019 Survey.

Observation	Date	Time	VP	On Site Observation Time (secs)	Off Site Observation Time (secs)	Activity	Habitat	Details
1	17.10.18	9.19 - 9.21	4	135	0	Flying	Rough grass and heath/bog	Male Hen Harrier flying east to west up valley over rough grass and heath/bog. Mobbed by Raven, driven off to southwest over hill.
2	17.10.18	9.38	1	40	0	Foraging	Conifer Plantation	Male Hen Harrier foraging, < 15m above ground level (AGL).
3a	17.10.18	11.24	6	0	49	Foraging	Heath/molinia	Ringtail (probable adult female) foraging low (0-5m AGL) off site over heath.
3b	17.10.18	12.08 - 12.11	6	0	180	Circling	Rough grassland	Ringtail (probable adult female) circling off site off site at a height of 5-25m AGL.
4	17.10.18	12.26	6	0	48	Foraging	Rough Grassland, Conifer Plantation	Ringtail (probable juvenile male) hunting off site over heath at a height of 0-5m AGL.
5	07.12.18	10.23	4	25	0	Foraging	Rough grassland/ Heath bog	Male Hen Harrier foraging low (<5m AGL) for 15 seconds and flying at 5-25m AGL for 10 secs.
6	07.12.18	11.33 - 11.34	6	0	60	Foraging, Flying	Rough Grassland, Conifer Plantation	Female Hen Harrier flying southwest c. 25-30m AGL, foraging and flew over conifer plantation to the south and lost from view.
7a	11.01.19	14.17	3	5	23	Flying	Conifer Plantation	Male Hen Harrier flying east at 20m AGL (over treetops).

Observation	Date	Time	VP	On Site Observation Time (secs)	Off Site Observation Time (secs)	Activity	Habitat	Details
7b	11.01.19	14.30	2	460	30	Foraging	Conifer Plantation, Rough Grassland, Improved Grassland	Male Hen Harrier hunting low (< 10m AGL)
8	28.03.19	15.39	6	0	149	Foraging	Heath/Bog	Ringtail Hen Harrier hunting low (1-3m AGL) over heath/bog northeast of VP6.

Hen Harrier Observations, Winter Season 2019/2020 Survey.

Observation	Date	Time	VP	On Site Observation Time (secs)	Off Site Observation Time (secs)	Activity	Habitat	Details
1	22.10.19	13.33	10	0	80	Foraging	Heath/Bog	Male Hen Harrier hunting over heath/bog at a height of <10m above ground level (AGL).
2	22.11.19	11.44	10	0	10	Foraging	Heath/Bog	Male Hen Harrier hunting over heath/bog at a height of <5m above ground level (AGL).
3	17.12.19	9.52	7	15	0	Foraging	Heath/Bog	Male Hen Harrier hunting and flying over bog to west of VP7 at 4-10m above ground level.
4	20.01.20	14.53	5	420	0	Foraging & perching	Conifer Plantation, Improved Grassland	Male Hen Harrier circling at 35m directly above VP5, being mobbed by 3 Hooded Crows. It flew north and descended as it flew and landed on a tree stump for 2 minutes. Then flew over conifer plantation at 20m height and foraged over improved grassland at 2-3m height before flying out of sight.
5	18.03.20	10.28	7 & 3	103	15	Foraging	Conifer Plantation	Male Hen Harrier hunting over bog and pre-thicket forestry at a height of 1-25m.

Observation	Date	Time	VP	On Site Observation Time (secs)	Off Site Observation Time (secs)	Activity	Habitat	Details
6	18.03.20	11.26	1	50	0	Foraging	Young Forestry, Scrub, Rush, Grassland	Male Hen Harrier rose out of scrub/new forestry south of VP1, foraged over new forestry and rushy grassland, zig zagging over habitat as it hunted, then flew south towards VP3 over mature forestry, flying low at all times
7	20.03.20	11.36	8	240	0	Foraging	Conifer Plantation, Improved Grassland	Male flying low over spruce forest, then hunting over rushy pasture before circling upwards to 40m height.

Hen Harrier Observations, Winter Season 2020/2021 Survey

Observation	Date	Time	VP	On Site Observation Time (secs)	Off Site Observation Time (secs)	Activity	Habitat	Details
1	13.10.20	12.03	10	120	0	Foraging	Forestry/Clearfell	Ringtail Hen Harrier flew from mature forest along margin of young forestry and clearfelled area. Foraging at a height of 5-20m.
2	15.10.20	10.02	2	30	0	Flying	Heath/Bog	Male Hen Harrier interacting with Hooded Crow. Flying at a height of 5-25m.
3	25.11.20	11.00	8	10	0	Foraging	Bog/ Rough Grassland	Male Hen Harrier hunting over bog to the south of VP8 at a height of <10m.
4	25.11.20	11.05	9	0	30	Foraging	Heath/Bog	Male Hen Harrier foraging, disturbed flock of Golden Plover from the ground.
5	25.11.20	11.36	10	0	170	Foraging	Heath/Bog	Male Hen Harrier hunting over bog around VP10 at a height of 1-6m.

Observation	Date	Time	VP	On Site Observation Time (secs)	Off Site Observation Time (secs)	Activity	Habitat	Details
6a	25.11.20	13.05	10	0	161	Flying	Heath/Bog, Forestry	Two male Hen Harriers flying together. One bird flew off to the west.
6b	25.11.20	13.07	10	0	230	Flying, On Ground	Heath/Bog, Forestry	The second male Hen Harrier landed on the ground and remained there for 2 minutes and 5 seconds (x on map) before taking off again and flying north.
7	27.11.20	11.12	3	10	45	Foraging	Heath/Bog	Male Hen Harrier foraging at a height of less than 3m and also perched.
8	10.12.20	12.33	10	4	8	Flying	Heath/Bog, Young Forestry	Male Hen Harrier flying low over new forestry from south. Flew over clear fell and new forest, then along edge of mature forest in an easterly direction. Flying at a height of 10-20m.

Observation	Date	Time	VP	On Site Observation Time (secs)	Off Site Observation Time (secs)	Activity	Habitat	Details
9	25.02.21	11.02	2	10	0	Flying	Heath/Bog	Ringtail (female) Hen Harrier flew west over brow of hill at a height of 5-10m.
10	16.03.21	11.35	10	0	68	Foraging, Flying	Heath/Bog	Male Hen Harrier flew from west over bog at 15m height north of VP10, then veered south east and hunting at a height of 5m above ground. Attempted strike twice on Meadow Pipit near stream to east of VP10.
11a&b	30.03.21	11.25	5 & 8	20	60	Flying	Forestry, Rough Grassland	Male Hen Harrier flying at a height of 5-25m.

Golden Plover Observations

Golden Plover Observations, Winter Season 2017/2018.

Date	Time	Observation No.	VP	On Site Observation Time (secs)	Off Site Observation Time (secs)	Activity	Habitat	Details
24.10.17	12.34	1	4	10	5	Circling	Bog, Rough Grassland	Flock of 8 Golden Plover circling over site briefly from southwest, then lost from view to the southwest again. Flying high, >100m and moving fast.
24.10.17	13.36	2	2	0	8	Flying	Bog	Flock of 8 Golden Plover flew in north-westerly direction. Birds were 15m above bog and in view for 8 seconds.
24.10.17	14.57	3	3	5	10	Flying	Bog, Conifer Plantation	3 Golden Plover flew from behind VP at 15-20m above ground to west towards valley.
09.11.17	10.40	4	1	20	30	Flying	Conifer Plantation, Rough Grassland	Flock of 35 Golden Plover flying c. 25-100m AGL.
09.11.17	11.12	5	3	30	180	Flying	Bog, Conifer Plantation	Flock of 22 Golden Plover flying 5-25m AGL.
09.11.17	11.18 - 11.25	6	3	120	300	Flying	Bog, Conifer Plantation	Flock of 35 Golden Plover flying c. 25-100m AGL. Only visible intermittently as they flew up and down behind brow of hill.

Date	Time	Observation No.	VP	On Site Observation Time (secs)	Off Site Observation Time (secs)	Activity	Habitat	Details
09.11.17	11.45 - 12.27	7	3	2,350	360	Flying, resting on ground	Bog, Conifer Plantation	Flock of 47 Golden Plover flying 25-100m AGL for c. 15 mins, then flew lower 5-25m and landed on site (see X on map). Stayed on the ground from 11.59 - 12.27 (28 mins).
09.11.17	11.51	8	5	150	0	Flying	Bog, Wet Grassland	Flock of c. 80 Golden Plover flew up and down valley to west of VP5 at 40-60m AGL. Dropped in height to 30m as they flew south and out of view.
09.11.17	12.20 - 12.21	9	2	0	60	Flying	Rough Grassland, Bog	Flock of 26 Golden Plover flew past VP2 heading east, then turned north and flew off brow of hill. Flight height 5-25m AGL.
09.11.17	12.49 - 13.09	10	5	0	1200	Flying	Conifer Plantation, Bog	Flock of c. 200 Golden Plover flying east and west between Musher Mountain and Knockcraugh Mountain at 20-80m AGL. Off site for c. 20 mins.

Date	Time	Observation No.	VP	On Site Observation Time (secs)	Off Site Observation Time (secs)	Activity	Habitat	Details
09.11.17	14.02	11	1	0	21	Flying	Conifer Plantation, Bog	Flock of 120 Golden Plover flying at 25-100m AGL. Similar sized flock seen >2km northeast (far off site) of this observation at 14.05 (additional time not recorded as so far from site).
26.01.18	11.51 - 11.56	12	3	90	210	Flying	Bog	Flock of 10 Golden Plover flying 2-35m AGL over bog. Circling for 4 mins before landing southwest of VP3 out of sight (but could be heard occasionally).
21.02.18	10.26 - 10.28	13	4	0	117	Flying	?	Flock of 28 Golden plover circling at 5-25m AGL off site.
21.02.18	13.15	14	3	10	0	Flying	Bog	Flock of 8 Golden Plover came into view from the southwest, flying north/northeast over 100m AGL. Lost from view to north of VP3.
21.02.18	13.25	15	1	0	10	Flying	Rough Grassland?	Flock of 8 Golden Plover flying low, <10m AGL.
26.02.18	12.44	16	5	10	15	Flying	Conifer Plantation, Rough Grassland	Flock of 19 Golden Plover flying fast >100m AGL.
26.02.18	12.49	17	5	0	5	Flying	Bog	Flock of 9 Golden Plover flying fast over VP5, 25-100m AGL.

Date	Time	Observation No.	VP	On Site Observation Time (secs)	Off Site Observation Time (secs)	Activity	Habitat	Details
16.03.18	12.28	18	3 & 2	40	5	Flying	Conifer Plantation, Bog	Flock of c. 75 Golden Plover flew northeast at 75-100m AGL. Fast direct flight. Lost from sight in low cloud.
16.03.18	13.48	19	2	0	6,120	Flying, resting on ground	Bog, Conifer Plantation, rough grassland?	Flock of c. 150 Golden Plover split from a group of 250 which were visible to the north (far off site) and flew towards the site at 5-10m AGL. Bunching and manoeuvring initially before rapid flight downhill. Landed behind tall conifers near VP2, off site. Stayed on the ground out of sight for the remainder of the watch (i.e. until 15.30).

Golden Plover Observations, Winter Season 2018/2019 Survey.

Date	Time	Observation No.	VP	On Site Observation Time (secs)	Off Site Observation Time (secs)	Activity	Habitat	Details
16.11.18	10.15	1	3	10	0	Flying	Heath/bog	Golden Plover heard calling over VP. Not seen in fog. On site.
07.12.18	11.10	2	3	10	10	Flying	Heath/bog	Flock of seven Golden Plover flying at a height of 60-80m.
07.12.18	14.00	3	4	0	40	Flying	Conifer Plantation	Flock of c. 20 Golden Plover flushed by Raven and flying at a height of 5-25m AGL.
11.01.19	9.26	4	3	18	4	Flying	Conifer Plantation	Flock of 5 Golden Plover flying c. 20m AGL.
11.01.19	09.40 - 11.20	5	3	0	6,000	Calling	Heath/bog	At least one Golden Plover heard calling at intervals. Not seen, either on the ground or flying.
11.01.19	12.47	6	3	30	0	Flying	Heath/bog	Flock of 40 Golden Plover flying east over heath bog at a height of > 100m.
11.01.19	13.35	7	3	0	36	Flying	Heath/bog	Flock of 26 Golden Plover flying and calling at a height of c. 20m AGL off site.
28.03.19	10.23	8	6	0	45	Flying	Heath/bog/scrub & improved grassland	Flock of 18 Golden Plover flying over heath/bog/scrub/improved grassland at a height of 150-170m AGL.

Date	Time	Observation No.	VP	On Site Observation Time (secs)	Off Site Observation Time (secs)	Activity	Habitat	Details
28.03.19	13.00	9	4	30	0	Flying	Rough Grassland, Improved Grassland	Flock of 10 Golden Plover flying at a height of 5-25m AGL.
27.03.19	12.05	A	RG TR1	n/a	0	On Ground	Heath/Bog	Flock of 9 Golden Plover flushed from bog during Red Grouse transect RG TR1.

Golden Plover Observations, Winter Season 2019/2020 Survey.

Date	Time	Observation No.	VP	On Site Observation Time (secs)	Off Site Observation Time (secs)	Activity	Habitat	Details
22.10.19	11.11	1	10	20	0	Flying	conifer plantation	Flock of 16 Golden Plover flying over conifer plantation at a height of c. 40m above ground level.
22.10.19	11.27	2	10 & 9	0	960	Flying	Heath/Bog	Flock of c. 250 Golden plover flying over heath/bog at a height of 50-100m for 11 minutes and >100m for 5 minutes.
19.11.29	9.46 - 10.31	3	2	1980	780	Circling	Heath/Bog	Flock of 70 Golden Plover took flight and were joined by a flock of 100 from the NE. After 10 mins they were joined by another flock of 100 - giving a total of 270 GP. After another 10 mins a flock of 100 left the group and flew off site to the west. The remaining 170 eventually landed off site to the north.
19.11.29	11.14	4	7	120	0	Flying & landing	Heath/Bog	Flock of 70 Golden Plover flying low (5-25m). Landed on site but not visible on ground.
19.11.29	11.36	5	2	90	30	Flying	Heath/Bog	Flock of 20 Golden Plover flying in a V-formation at a height of >100m.
19.11.29	11.40	6	4	8	0	On ground	Heath/Bog	Flock of 7 Golden Plover on the ground near VP4

Date	Time	Observation No.	VP	On Site Observation Time (secs)	Off Site Observation Time (secs)	Activity	Habitat	Details
19.11.29	12.43	7	7 & 2	300	180	Flying	Heath/Bog	Flock of 75 Golden Plover flying at a height of 25-100m, probably landed.
19.11.29	13.08	8	7 & 2	50	120	Flying	Heath/Bog	Flock of 65 Golden Plover flying mainly north of the site, occasionally entering the site. Flying at a height of c. 60m.
22.11.19	11.53	9	8	250	0	Flying	Heath/Bog	Flock of 21 Golden Plover calling and flying at a height of 30-40m above ground level.
22.11.19	11.57	10	8	251	0	Flying	Heath/Bog	Flock of 14 Golden Plover flying low over bog and calling.
22.11.19	12.10	11	8	3076	0	On ground	Heath/Bog	Flock of 15 Golden Plover landed on heath/bog southwest of VP8. Later took off up into cloud/fog and lost from sight.
22.11.19	12.40	12a	9	0	50	Flying	Heath/Bog	Flock of 12 Golden Plover flying over heather bog at a height of 10-25m above ground level.
22.11.19	12.42	12b	9	0	15	Flying	Heath/Bog	Flock of 12 Golden Plover (same as 12a) flying over heather bog at a height of 10-25m above ground level.
22.11.19	12.55	13	10	0	5	Flying	Heath/Bog	Golden Plover heard in flight off site near VP10 but not seen.

Date	Time	Observation No.	VP	On Site Observation Time (secs)	Off Site Observation Time (secs)	Activity	Habitat	Details
22.11.19	13.49	14a	6	0	30	Flying	Heath/Bog	Flock of 200 GP flying at a height of over 200m over VP5.
22.11.19	13.49	14b	6	0	45	Flying	Heath/Bog	A group of 75 split off from the main flock and flew north east.
22.11.19	13.54	15	5	16	0	Flying	Rough grassland, Improved grassland	Flock of 15 Golden Plover flying at a height of 80m above ground level.
16.12.19	10.12	16a	9	0	900	Flying, On Ground	Heath/Bog	Flock of 130 Golden Plover arrived from ENE, circled over bog at a height of 25-100m. Group of 25 dropped on to bog.
16.12.19	10.27	16b	9	25	755	Flying	Heath/Bog	Flock of 160 Golden Plover joined the original flock and continued circling ascending to c. 400m.
16.12.19	11.02	17	9	0	40	Flying	Heath/Bog	Flock of 23 Golden Plover appear to have just taken off from bog.
16.12.19	11.05	18	9	30	620	Flying	Heath/Bog	Flock of 23 Golden Plover flying at a height of 40-150m.
16.12.19	11.15	19	9	0	35	Flying		Flock of 7 Golden Plover circling initially at a height of 30m.
16.12.19	11.16	20	9	45	240	Flying	conifer plantation	Flock of 16 Golden Plover flying at a height of 40-125m.

Date	Time	Observation No.	VP	On Site Observation Time (secs)	Off Site Observation Time (secs)	Activity	Habitat	Details
16.12.19	11.20	21	9	10	480	Flying	conifer plantation	Flock of 20 Golden Plover join the 16 from flightline 19 and circle near VP10 at a height of 50-100m.
16.12.19	11.25	22	8	0	5	Flying	Bog and Forestry	Two groups of 6 GP flew behind VP9 over Knockduff turbines in a North East Direction. Flying high (150m).
16.12.19	13.57	23	9	0	150	Flying	conifer plantation	Flock of 3 GP took off from bog north of VP 9.
17.12.19	9.35	24	4	10	0	Flying	Heath/bog/conifer plantation	One Golden Plover flying low (0-5m).
17.12.19	9.52	25	7	12	0	Flying	Heath/Bog	Two GP flying at 10-20m above ground level - probably flushed by Hen Harrier.
20.01.20	10.24	26	2	20	0	Flying		One GP flying - lost from view against sun.
21.01.20	9.37	27	7	45	0	Flying	Heath/Bog & Forestry	Flock of 4 GP flying over heather bog and forestry at a height of 25-100m.
21.01.20	11.40	28	3	0	375	Flying, On Ground	Heath/Bog, rough grassland	Flock of 30 GP on ground for 5 minutes and inflight at a height of <150m for 75 secs.
21.01.20	13.14	29	7	10	0	Flying	Heath/Bog	Flock of c. 50 GP flying over bog at a height of 80m.
20.02.20	9.40	30	7	10	0	Flying	Heath/Bog	3 GP flying over heath/bog at a height of 20m.

Date	Time	Observation No.	VP	On Site Observation Time (secs)	Off Site Observation Time (secs)	Activity	Habitat	Details
20.02.20	9.57	31	7	0	45	Flying	Heath/Bog	5 GP flying over heath/bog at a height of 10-15m.
20.02.20	10.15	32a	7	15	0	Flying	Heath/Bog	6 GP flying over heath/bog at a height of 10-20m. Lost from sight in cloud.
20.02.20	10.18	32b	7	14	0	Flying	Heath/Bog	6 GP flying low (1-2m height) over heath/bog.
20.02.20	10.25	33	8	0	12	Flying	Heath/Bog	Flock of 60 GP flying at a height of 50m off site.
20.02.20	10.54	34	7	200	31	Flying	Heath/Bog	Flock of 92 GP flying around VP7 and off to the NE at a height of 40-100m.
20.02.20	11.20	35	2	0	20	Flying	Heath/Bog and Forestry	Flock of 50 GP Circling and flying to the north of VP2 before disappearing behind the hill behind VP2.
18.03.20	8.58	36	4	120	0	Flying	Heath/Bog	Flock of 40 GP flying at a height of 25-100m.
18.03.20	9.10	37	4	20	0	Flying	Heath/Bog, rough grassland	Flock of 30 GP flying at a height of 5-25m.
18.03.20	9.29	38	2	45	0	Flying	Heath/Bog	Flock of 10 GP flew southeast at a height of 80m. Dipped below ridge out of sight.

Date	Time	Observation No.	VP	On Site Observation Time (secs)	Off Site Observation Time (secs)	Activity	Habitat	Details
18.03.20	9.50 - 12.08	39	4	8,280	0	Roosting, Flying	Conifer Plantation, grassland	Flock of 54 GP roosting in front of VP4 for a few hours. Some feeding, mostly roosting. Flew off to north at 12.08 at a height of 5-25m.
18.03.20	9.55	40	7	60	0	Flying	Heath/Bog	8 GP flying over bog at a height of <50m.
18.03.20	11.25	41	7	180	60	Flying	Heath/Bog	7 GP flying over bog at a height of 50-150m.
18.03.20	11.48	42	4	10	20	Flying	Heath/Bog, Conifer Plantation	Flock of at least 200 GP flying - distant observation.
18.03.20	12.40	43	1	4	0	Flying	Forestry	Flock of 20 GP. Very brief appearance before disappearing into cloud. Flying south of VP7 in a southerly direction towards VP4.
18.03.20	12.49	44	7	170	20	Flying	Heath/Bog	Flock of 40 GP flying over bog at a height of 25-200m.
18.03.20	12.54	45	2	30	0	Flying	Conifer Plantation, grassland	Flock of 40 GP flying at a height of over 200m.
18.03.20	13.15	46	4	0	120	Flying	Conifer Plantation, grassland	Flock of c. 100 GP flying at a height of 25-100m.

Date	Time	Observation No.	VP	On Site Observation Time (secs)	Off Site Observation Time (secs)	Activity	Habitat	Details
18.03.20	14.55	47	1	40	0	Flying	Forestry, Agricultural land, Bog	Flock of 150 GP flying high in four distinct groups which split and merged as they flew. Flew from VP2 over centre of the site in a southerly direction then flew in a south westerly direction before disappearing out of view
18.03.20	15.07	48	1	60	0	Flying	Forestry	Flock of 38 GP flew from the west between VP1 and VP7, flying high, turning and flying in a south/south easterly direction before disappearing out of view.
18.03.20	13.50	49	2	55	0	Flying		Flock of 30 GP flying south/southeast, then circled east of VP1 and then headed east/northeast out of sight.
20.03.20	12.25	50	6	0	60	Flying	Pasture	Flock of 29 GP flying over grassland at a height of 25-100m.

Golden Plover Observations, Winter Season 2020/2021 Survey.

Date	Time	Observation No.	VP	On Site Observation Time (secs)	Off Site Observation Time (secs)	Activity	Habitat	Details
13.10.20	9.27	1	10	2	3	Flying	Heath/bog/conifer plantation	Flock of 5 Golden Plover flying at a height of 20-30m (dipped low out of clouds).
13.10.20	12.11	2	5	20	0	Flying		Flock of 50 Golden Plover flying at a height of 15 to 100m.
15.10.20	9.00	3	2	5	0	Flying		One bird heard but not seen.
15.10.20	10.33	4	7	8	2	Flying	Heath/Bog	Flock of 4 GP flew towards VP7 from the west and turned north at a height of 5m. Heard again west of VP.
15.10.20	13.01	5	4	51	0	Flying	Heath/Bog	Flock of 26 GP flying over VP and off to the south at a height of 40-50m.
15.10.20	13.10	6	2	60	0	Flying	Heath/Bog	Flock of 11 GP flying at a height of 5-25m.
15.10.20	13.17	7	7	12	8	Flying	Heath/Bog	Flock of 9 GP flying north at a height of 15m.
15.10.20	14.06	8	2	120	0	Flying	Heath/Bog	Flock of 6 GP flying at a height of 5-25m.
25.11.20	9.00	9	9	180	0	Flying	Heath/Bog	Flock of 30 GP flying low (<25m), may have landed.
25.11.20	9.31	10	10	0	1,241	Flying	Forestry. Bog, Improved	Flock of c. 400 GP flying NE of VP10 at a height of 80-150m over existing wind farm to the north.

Date	Time	Observation No.	VP	On Site Observation Time (secs)	Off Site Observation Time (secs)	Activity	Habitat	Details
							Grassland and Rough Grassland	
25.11.20	9.40	11	10	0	20	Flying	Heath/Bog	Flock of 14 GP flying over VP 10 at a height of 10-30m.
25.11.20	9.42	12	2	50	0	Commuting	Heath/Bog	Flock of 11 GP flying at a height of 60-150m.
25.11.20	10.21	13	8	0	10	Flying	Heath/Bog	Flock of 8 GP flying at a height of 100m to the east of VP8.
25.11.20	10.23	14	10	0	137	Flying	Heath/Bog, Forestry	Flock of 15 GP flying near substation to the NW of VP 10 at a height of 10-30m.
25.11.20	10.25	15	9	0	10	Flying	Forestry	One GP Flying at a height of 5-25m.
25.11.20	10.37	16	6	0	60	Flying	Grassland	Flock of 25 GP flying SW at a height of 100m.
25.11.20	11.01	17	2	10	0	Commuting	Heath/Bog	Flock of 9 GP flying a height of 10-20m
25.11.20	11.05	18	9	0	30	On Ground, Flying	Heath/Bog	Flock of 30 GP flew up from ground when Hen Harrier flew over.
25.11.20	11.47	19	10	0	30	Flying	Heath/Bog	Flock of 40 GP flying over VP10, same route as flightline 11.
25.11.20	11.58	20	10	0	97	Flying	Heath/Bog	Flock of 67 GP flying over VP10 at a height of 40-60m.

Date	Time	Observation No.	VP	On Site Observation Time (secs)	Off Site Observation Time (secs)	Activity	Habitat	Details
25.11.20	12.01 - 13.12	21	10	0	4,290	Flying, on ground.	Forestry, Recolonising bare ground	Flock of 40 GP flying near substation to north of site and landed near substation. Flushed by Hen Harrier at 13.12.
25.11.20	12.08	22	10	0	45	Flying	Heath/Bog	Flock of 19 GP flying at a height of 40m to the west over VP10.
25.11.20	12.30	23	9	0	180	Flying		Flock of 200 GP flying at a height of 5-25m.
25.11.20	12.31	24	10	0	106	Flying	Heath/Bog	Flock of 15 GP flying at a height of 70-80m.
25.11.20	12.46	25	6	0	130	Flying	Grassland	Flock of 25 GP flying east.
25.11.20	13.29 - 13.49	26	10	0	1,165	Flying, on ground.	Heath/Bog	Flock of 68 GP flying at a height of 50-80m. A flock of 30 broke off and landed near the substation for 10 minutes.
25.11.20	14.01	27	10	0	300	Flying	Heath/Bog, Forestry	Flock of 68 GP flying near substation at a height of 40-80m, some birds left leaving 46 birds for the final 4 minutes.
25.11.20	14.31	28	8	10	0	Flying	Forestry, Heath/Bog	2 GP flew east the back west at a height of 30-50m.
25.11.20	14.37	29	8	5	0	Flying	Heath/Bog	Flock of 80 GP flying at height of 50-80m.
25.11.20	14.46	30	10	0	127	Flying	Forestry	Flock of 35 GP flying over forestry at a height of 60-80m.

Date	Time	Observation No.	VP	On Site Observation Time (secs)	Off Site Observation Time (secs)	Activity	Habitat	Details
27.11.20	9.15	31	7	75	0	Flying	Heath/Bog	Flock of 11 GP flying at a height of 10-30m.
27.11.20	9.17	32	7	45	0	Flying	Heath/Bog	Flock of 5 GP flying at a height of 20-30m
27.11.20	9.45	33	7	0	60	Flying	Heath/Bog	Flock of 60 GP flying at a height of 40-50m
27.11.20	10.13	34	4	15	0	Commuting		Flock of 50 GP flying at a height of 50-100m.
27.11.20	11.41	35	7	265	0	Flying	Forestry, Improved Grassland	Flock of 30 GP flying at a height of 150-200m.
27.11.20	11.52	36	7	157	0	Flying	Heath/Bog	Flock of 56 GP flying at a height of 50-100m.
27.11.20	12.05	37	3	10	33	Flying	Heath/Bog	Flock of 25 GP flying at a height of >100m.
27.11.20	12.10	38	1	10	0	Flying		Flock of 30 GP flying at a height of 25-100m.
08.12.20	9.33	39	7	70	0	Flying	Forestry, Grassland	Flock of 10 GP flying at a height of 100m
08.12.20	9.58	40	3	50	0	flying, Landed on bog	Heath/Bog	Flock of 14 GP landed on bog.
08.12.20	10.32	41	2	32	0	Flying	Heath/Bog	Flock of 10 GP flying at a height of 20-25m
08.12.20	12.12	42	7	130	0	Flying	Forestry, Grassland	Flock of 30 GP flying at a height of 120m.
08.12.20	13.47	43	7	110	0	Flying	Forestry, Grassland	Flock of 25 GP flying at a height of 120m.

Date	Time	Observation No.	VP	On Site Observation Time (secs)	Off Site Observation Time (secs)	Activity	Habitat	Details
08.12.20	14.00	44	4	30	0	Flying		Flock of 75 GP flying at a height of 25-100m.
10.12.20	8.34	45	10	0	10	Flying	Heath/Bog	Flock of 16 GP flying low (0-20m) and circling.
10.12.20	8.39	46	10	0	9	Flying	Heath/Bog	Flock of 22 GP flying at a height of <20m.
10.12.20	8.55	47	10	0	5	Flying	Heath/Bog	Flock of 11 GP flying at a height of <10m.
10.12.20	10.14	48	9	5	0	Flying	Heath/Bog	Flock of 40 GP flying at a height of 5-10m.
21.01.21	9.53	49	8	0	50	Flying	Bog, Forestry	Flock of c.100 flying at a height of 40-60m.
21.01.21	10.09	50	9	0	30	Flying	Bog, Forestry	Flock of c.60 flying at a height of 100m.
21.01.21	10.35	51	9	0	5	Flying	Heath/Bog	Flock of c.18 flying at a height of 25-100m.
21.01.21	10.35	52	9	0	21,600	On Ground	substation	Flock of GP on hardcore area in front of substation to the north of the site. Numbers varied throughout the day from 35-100 GP.
21.01.21	13.57	53	9	0	217	Flying	Bog, Forestry	Flock of 64 flying at a height of 100-120m within existing wind farm.
21.01.21	14.12	54	9	0	230	Flying	Heath/Bog	Flock of 46 GP flying at a height of 100m over VP and within existing wind farm.

Date	Time	Observation No.	VP	On Site Observation Time (secs)	Off Site Observation Time (secs)	Activity	Habitat	Details
21.01.21	15.17	55	9	0	68	Flying	Heath/Bog	Flock of 26 GP flying at a height of 40-50m.
21.01.21	15.24	56	9	0	63	Flying	Forestry	Flock of 26 GP flying at a height of 80m.
22.01.21	10.50	57	3	10	180	Flying	Heath/Bog, Grassland	Flock of 35 GP flying at a height of 10-30m.
22.01.21	11.00	58	3	0	150	Flying	Heath/Bog, Grassland	Flock of 55 GP flying at a height of 10-50m.
22.01.21	11.13	59	3	0	120	Flying	Heath/Bog, Grassland	Flock of 70 GP flying at a height of 30-50m.
22.01.21	11.50	60	4	0	5	Flying	Heath/Bog	Flock of 20 GP flying at a height of 30m.
22.01.21	12.03	61	1	8	0	Flying	Bog, Forestry	Flock of 35 GP flying at a height of 50-100m.
22.01.21	12.30	62	3	0	35	Flying	Heath/Bog, Grassland	Flock of 6 GP flying at a height of <3m.
22.01.21	13.05	63	4	660	0	Flying	Bog, Forestry	Flock of 130 GP flying at a height of 30-200m.
22.01.21	13.08	64	3	0	90	Flying	Heath/Bog, Grassland	Flock of c.130 GP flying at a height of 80-100m.
22.01.21	13.17	65	6	30	0	Flying		Flock of c.100 GP flying at a height of 25-100m.
22.01.21	13.46	66	7	54	0	Flying	Heath/Bog	Flock of 20 GP flying at a height of 20-30m.

Date	Time	Observation No.	VP	On Site Observation Time (secs)	Off Site Observation Time (secs)	Activity	Habitat	Details
22.01.21	14.10	67	7	15	0	Flying	Heath/Bog	Flock of 6 GP flying at a height of 40m.
22.01.21	14.14	68	1	9	0	Flying	Bog, Forestry	Flock of 35 GP flying at a height of 100m.
22.01.21	14.22 - 14.29	69	1	420	0	Flying	Bog, Forestry	Flock of c.80 GP flying at a height of 100-150m.
22.01.21	14.23	70	4	120	0	Flying	Bog, Forestry	Flock of 50 GP flying at a height of 40-80m.
22.01.21	14.36	71	3	0	65	Flying	Heath/Bog, Grassland	Flock of 85 GP flying at a height of 80-100m.
22.02.21	10.16	72	3	0	60	Flying	Heath/Bog	Flock of 30 GP flying at a height of 5-25m.
22.02.21	10.28	73	3	0	10	Flying	Heath/Bog	Flock of 6 GP flying at a height of 5-25m.
25.02.21	10.10	74	5	0	120	Flying	Heath/Bog	Flock of c.200 GP flying at a height of 30-100m.
25.02.21	10.11	75	2	4	2	Flying	Heath/Bog	Flock of c.100 GP flying at a height of 100m.
25.02.21	10.25	76	9	0	500	Flying	Heath/Bog	Flock of c.400-500 GP flying at a height of 100m.
25.02.21	10.55	77	9	0	360	Flying	Heath/Bog	Flock of c.400 GP flying at a height of 100m.
25.02.21	11.12	78	9	60	120	Flying	Heath/Bog	Flock of 100 GP flying at a height of 25-100m.
25.02.21	11.18	79	2	8	0	Flying	Heath/Bog	Flock of 20 GP flying at a height of 50m.

Date	Time	Observation No.	VP	On Site Observation Time (secs)	Off Site Observation Time (secs)	Activity	Habitat	Details
25.02.21	11.30	80	9	0	180	Flying	Heath/Bog	Flock of c.400 GP flying at a height of 25-100m. C.100 landed briefly on the bog.
16.03.21	9.19	81	4	180	0	Flying	Heath/Bog	Flock of c.35 GP calling and flying at a height of 25-175m. May have landed.
16.03.21	9.27	82	1	95	0	Flying	Bog, Forestry	Flock of c.30 GP flying at a height of 100m.
16.03.21	9.33	83	4	90	0	Flying	Heath/Bog	Flock of c.25 GP flying at a height of 25-175m.
16.03.21	9.40	84	3	0	600	Flying	Heath/Bog	Flock of c.30 GP flying at a height of 25-100m.
16.03.21	10.17	85	4	30	0	Flying	Heath/Bog	Flock of c.35 GP flying at a height of <10m.
16.03.21	10.28	86	3	0	20	Flying	Heath/Bog	Flock of 3 GP flying at a height of 5-25m.
16.03.21	10.33	87	3	15	0	Flying	Heath/Bog	Flock of 15 GP flying at a height of 5-25m.
16.03.21	11.15	88	9	30	180	Flying	Bog, Forestry, Grassland	Flock of 9 GP flying at a height of 10-50m.
16.03.21	11.18	89	3 & 1	40	10	Flying	Heath/Bog, Rough Grassland	Flock of 30 GP flying at a height of 5-25m.
16.03.21	11.22	90	1 & 4	360	0	Flying	Heath/Bog, Rough Grassland	Flock of 25-30 GP flying at a height of 25-175m.
16.03.21	11.46	91	2	20	0	Flying	Heath/Bog	Flock of 20 GP flying at a height of 5-10m.

Date	Time	Observation No.	VP	On Site Observation Time (secs)	Off Site Observation Time (secs)	Activity	Habitat	Details
16.03.21	14.14	92	7	55	0	Flying	Bog, Forestry, Grassland	Flock of c.200 GP flying at a height of 20-50m.
16.03.21	14.22	93	7	0	75	Flying	Heath/Bog	Flock of c.400 GP flying at a height of >150m.
16.03.21	14.23	94	7	0	15	Flying	Heath/Bog	Flock of c.50 GP flying at a height of 50-60m, broke off from larger flock.
16.03.21	14.25	95	10	5	208	Flying	Forestry, Bog	Flock of c.100 GP flying at a height of 100-150m.
16.03.21	14.37	96	2	150	270	Commuting	Heath/Bog	Flock of c.350-400 GP flying at a height of 100-200m.
30.03.21	11.21	97	8	20	0	Flying	Forestry, Grassland	Flock of 38 GP flying at a height of 25-60m.
30.03.21	12.04	98	5	10	0	Flying	Heath/Bog	Flock of c.30 GP flying at a height of 5-25m.

Peregrine Falcon Observations

Peregrine Falcon Observations, Winter Season 2017/2018.

Date	Time	Observation No.	VP	On Site Observation Time (secs)	Off Site Observation Time (secs)	Activity	Habitat	Details
09.11.17	14.37	1	5	0	60	Circling	Bog, Conifer Plantation	Adult Peregrine Falcon circled at 70m over VP5 and flew east down the valley.

Peregrine Falcon Observations, Winter Season 2018/2019 Survey.

Date	Time	Observation No.	VP	On Site Observation Time (secs)	Off Site Observation Time (secs)	Activity	Habitat	Details
17.10.18	9.54	1	4	516	0	Flying	Heath/bog, rough grassland	Adult Peregrine Falcon flying over heath/bog and rough grass, initially seen at 0-5m AGL and ascending to a height of 25-100m AGL.
17.10.18	10.13	2	6	0	83	Flying	Improved grassland	Peregrine Falcon flying high (c. 230m AGL), off site.
17.10.18	10.17	3	1	11	0	Flying		Peregrine Falcon flying fast at a height of 20-30m.
17.10.18	11.18	4a	6	0	58	Flying	Rough grassland	Immature Peregrine Falcon flying off site, flew across valley and lost from view.

Date	Time	Observation No.	VP	On Site Observation Time (secs)	Off Site Observation Time (secs)	Activity	Habitat	Details
17.10.18	11.33	4b	6	0	15	Circling	Conifer Plantation	Immature female Peregrine Falcon (presumed same as 4a) circling off site at 60m AGL.
17.10.18	14.17	5a	5	20	10	Foraging	Bog/heath, rough grassland	Peregrine Falcon hunting close to Carrigagulla hill at 50-100m AGL. Headed off to west and northwest and picked up by VP4 observer (see 5b).
17.10.18	14.21	5b	4	40	0	Flying	Conifer Plantation	Adult Peregrine Falcon flying over forestry northeast of VP4 before moving off to the east at a height of 30m.
22.11.18	10.17	6	2	40	147	Flying	heath/bog	Immature Peregrine Falcon flying over heath/bog north of VP2. Mobbed by Ravens and moved off to the north behind hill. Flying at a height of 10-40m AGL.
22.11.18	10.39	7	5	0	8	Flying	heath/bog	Immature Peregrine Falcon flying along the base of Carrigagulla hill at a height of 2-5m AGL.
15.02.19	9.53	8	1	6	0	Foraging	Rough grassland	Peregrine Falcon diving and fast flying at a height of 0-40m AGL.

Peregrine Falcon Observations, Winter Season 2019/2020 Survey.

Date	Time	Observation No.	VP	On Site Observation Time (secs)	Off Site Observation Time (secs)	Activity	Habitat	Details
22.10.19	13.08	1	9	0	30	Hunting	Heath/Bog	Peregrine Falcon pursuing small flock of Snipe for 40 seconds. The birds and Falcon gained altitude and were lost from sight above clouds.
20.01.20	11.51	2	2	16440	0	Flying, On Ground	Heath/Bog	Female (probably sub-adult as noticeable streaking on breast) flying low and landing on bog. Remained on bog for remainder of survey. Moving a short distance several times. Still present at 16.25.
20.02.20	11.46	3	4 & 3	25	25	Flying, Perched	Heath/Bog, Conifer Plantation	Peregrine Falcon perched on rock, then flew off over heather bog and conifer forest at a height of 1-20m. Flew over VP3 and west over hill and out of view.
20.02.20	12.17	4a	4	30	0	Flying, Perched	Heath/Bog	Peregrine Falcon back again at previous perch, then flew over bog at height of 10-20m.
20.02.20	12.19	4b	1	5	0	Flying	Grassland	Peregrine Falcon flying northeast at a height at 20m. Lost from view behind treeline.
20.02.20	13.18	5	4	4	0	Flying	Heath/Bog	Peregrine Falcon seen flying over bog at a height of 5m.

Date	Time	Observation No.	VP	On Site Observation Time (secs)	Off Site Observation Time (secs)	Activity	Habitat	Details
20.02.20	13.24	6	4	20	0	Flying	Heath/Bog	Peregrine Falcon seen flying over bog at a height of 10-25m.
20.02.20	13.30	7	1	3	0	Flying	Forestry	Peregrine Falcon seen briefly over forestry at a height of 10-15m.
20.02.20	13.44	8	3	18	0	Flying	Heath/Bog	Peregrine Falcon flew over VP3 at a height of 15m and flew west over hill and out of view.
20.02.20	14.42	9	4	10	10	Flying	Heath/Bog, Conifer Plantation	Peregrine Falcon flying over bog and forestry at a height of 10-25m.

Peregrine Falcon Observations, Winter Season 2020/2021 Survey.

Date	Time	Observation No.	VP	On Site Observation Time (secs)	Off Site Observation Time (secs)	Activity	Habitat	Details
25.11.20	12.32	1	10	120	258	Flying	Heath/bog, Forestry	Peregrine Falcon moved east to west in front of VP 10 and over the hill behind VP8 at a height of 20-70m above ground level.
08.12.20	10.50	2	3	10	0	Commuting	Forestry	Male Peregrine Falcon flying at a height of 20m.
22.01.21	13.03	3	4	15	0	Commuting	Heath/Bog	Peregrine Falcon flying at a height of 10-20m.

Merlin Observations

Merlin Observations, Winter Season 2018/2019 Survey.

Date	Time	Observation No.	VP	On Site Observation Time (secs)	Off Site Observation Time (secs)	Activity	Habitat	Details
16.03.18	9.17	1	6	0	28	Perched, Flying	Rough Grassland	Female/immature Merlin perched on Hawthorn for 20 secs, then flew over rough grassland at a height of 20-30m for 8 secs.

Merlin Observations, Winter Season 2019/2020 Survey.

Date	Time	Observation No.	VP	On Site Observation Time (secs)	Off Site Observation Time (secs)	Activity	Habitat	Details
22.10.19	12.46	1	10	0	15	Flying	Heath/Bog	Female/immature Merlin flying over heath/bog at a height of 10m above ground level.
22.10.19	14.07	2	10	0	20	Flying	Heath/Bog	Female/immature Merlin flying over heath/bog at a height of 10m above ground level.
27.02.20	11.37	3a	10	0	900	Flying, Perched	Blanket Bog	Possible merlin perched on a fencing pole c 1km from VP10 for almost 15mins, flew low over bog in

Date	Time	Observation No.	VP	On Site Observation Time (secs)	Off Site Observation Time (secs)	Activity	Habitat	Details
								westerly direction before disappearing in bog.
27.02.20	12.33	3b	10	0	3	Flying, Perched	Blanket Bog	Possible Merlin perched on pole west of VP10 and flew briefly before disappearing into bog

Merlin Observations, Winter Season 2020/2021 Survey.

Date	Time	Observation No.	VP	On Site Observation Time (secs)	Off Site Observation Time (secs)	Activity	Habitat	Details
22.01.21	11.23	1	4	20	0	Flying	Heath/Bog	Female Merlin flying at a height of 5-10m.
22.01.21	11.39	2	4	5	0	Flying	Heath/Bog	Female Merlin flying at a height of 1m.
16.03.21	12.06	3	4	60	0	Flying	Forestry, Bog	Male Merlin flew west across bog, then over forestry at a height of <10m.

Red Kite Observations

Red Kite Observations, Winter Season 2019/2020 Survey.

Date	Time	Observation No.	VP	On Site Observation Time (secs)	Off Site Observation Time (secs)	Activity	Habitat	Details
22.10.19	12.32 - 12.45	1	5 & 6	480	359	Flying	Improved Grassland, Forestry, Heath	Red Kite (no wing tags) flying west/southwest. Initially seen south/southwest of VP5 over improved grassland at a height of 150-200m. Mobbed by Hooded Crows/Rooks. Glided/flew off to the west/southwest and dropped down out of sight (80-100m AGL).

White-tailed Sea Eagle Observations

White-tailed Sea Eagle Observations, Winter Season 2019/2020 Survey.

Date	Time	Observation No.	VP	On Site Observation Time (secs)	Off Site Observation Time (secs)	Activity	Habitat	Details
20.03.20	11.17 - 11.26	1	9	420	120	Flying	Heath/Bog & Forestry	Juvenile White-tailed Sea Eagle flew from the east over forestry to the east of VP9, being mobbed by crow, flew in a west/north westerly direction over bog near VP9, circled over forestry north west of VP9 before turning south and flying over the centre of the site in a south westerly direction circling and flying, circling over the peak of Musheramore, then flying off to the west/south west out of sight. Red tag on eagle's wing, numbers not decipherable, appeared to be juvenile as no distinct white tail apparent. Flight height 40-250m.

Figure 18 Winter 2017-2018 Golden Plover

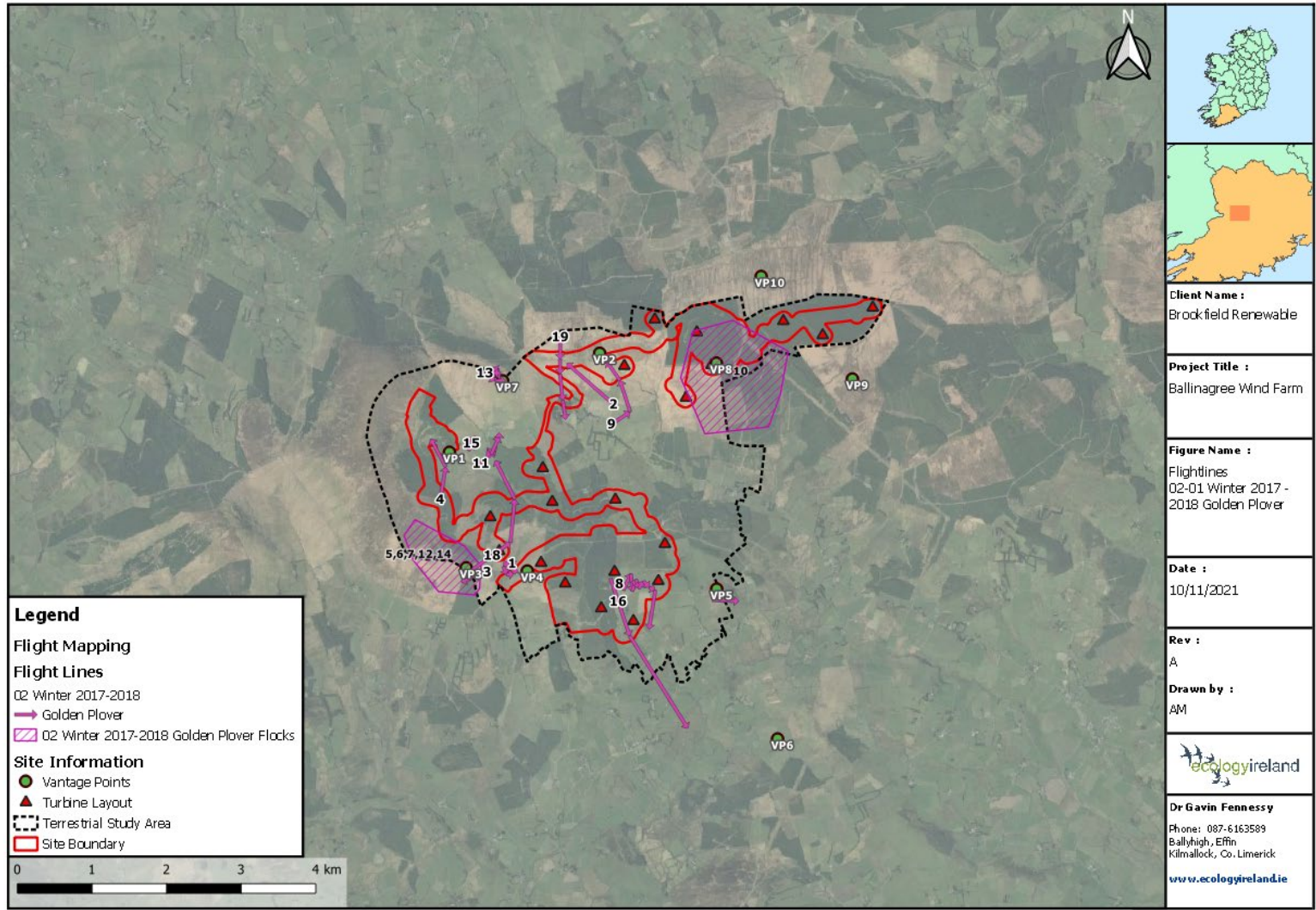


Figure 19 Winter 2017-2018 Hen Harrier

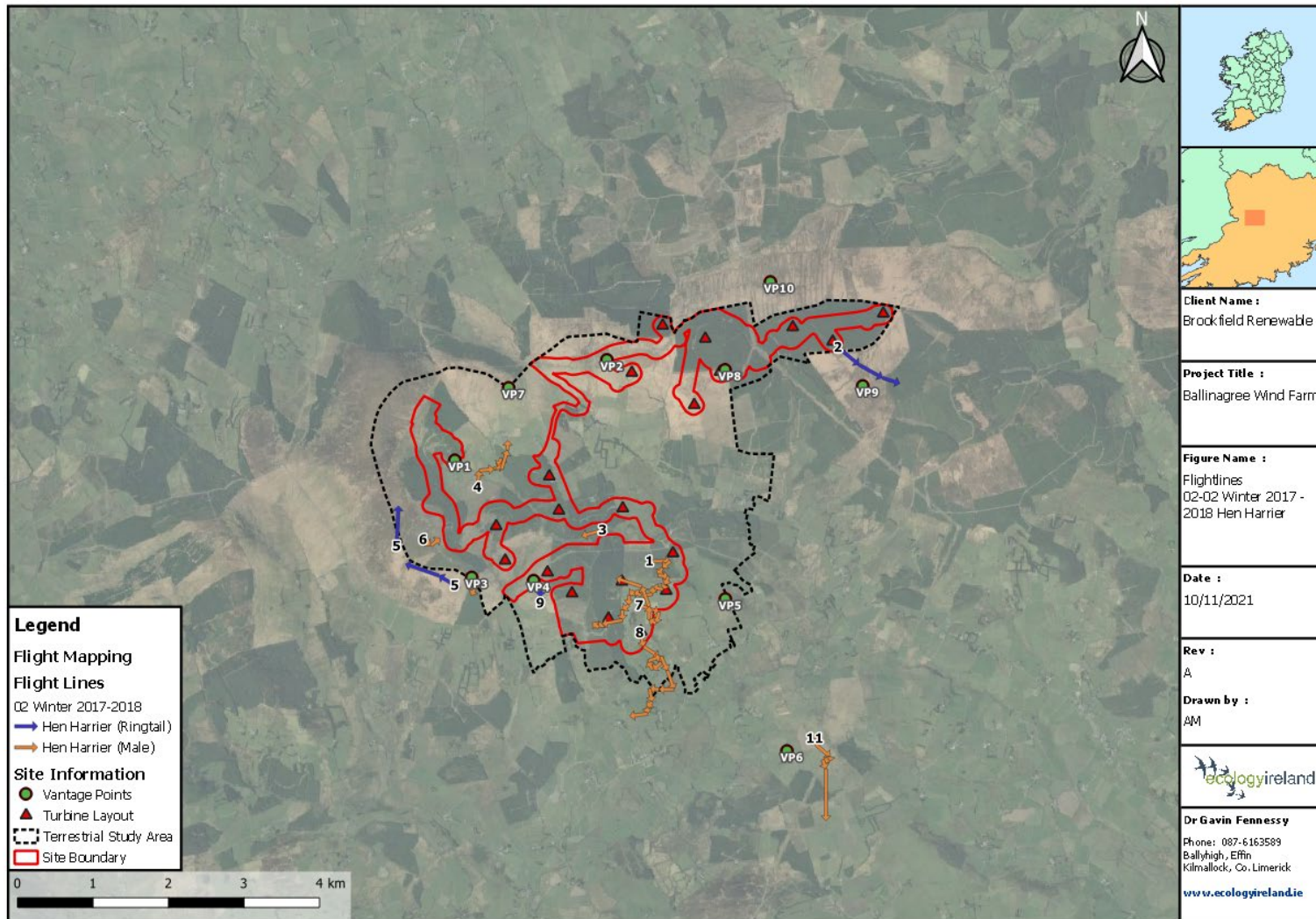


Figure 20 Winter 2017-2018 Peregrine

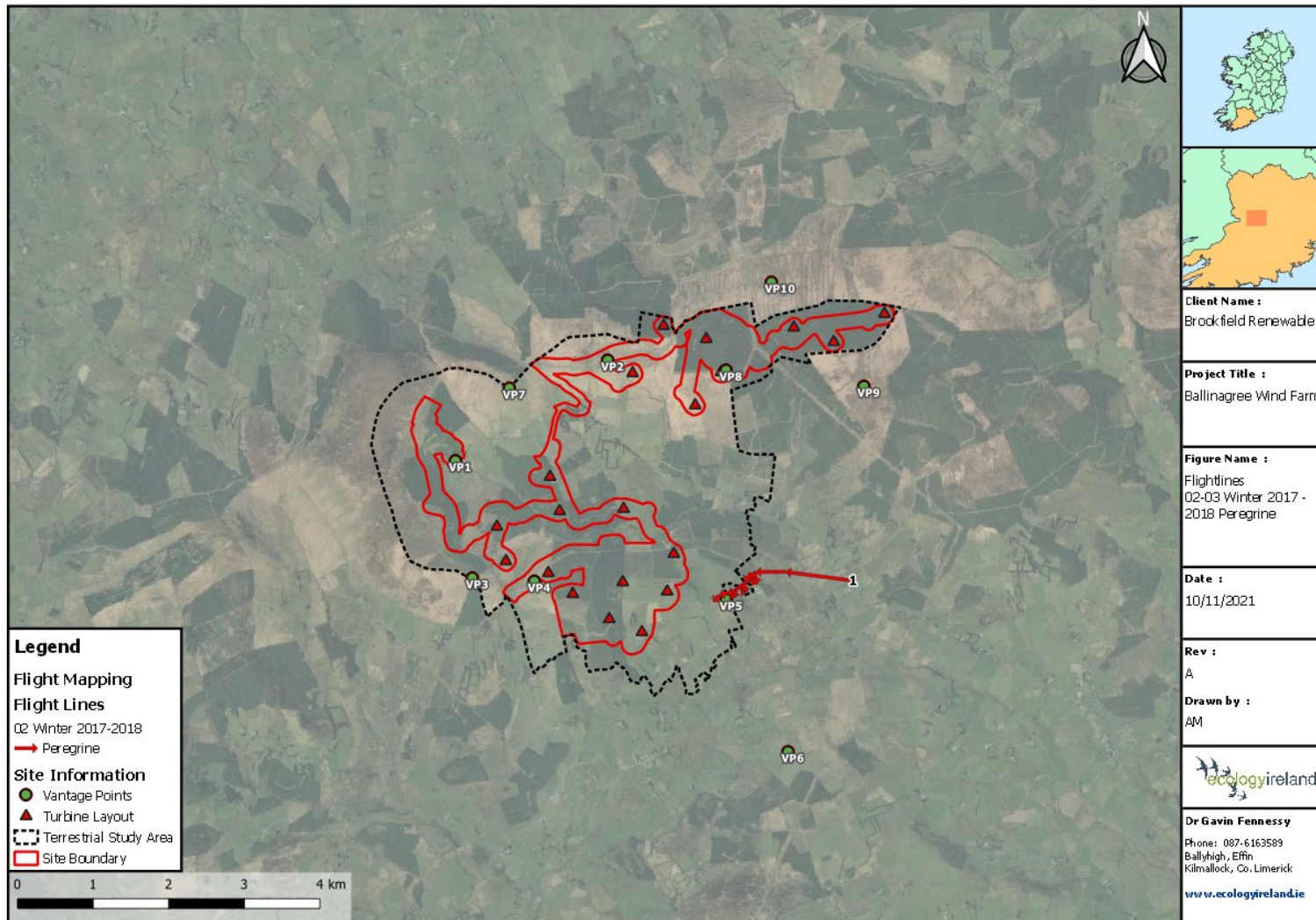


Figure 21 Winter 2017-2018 Merlin

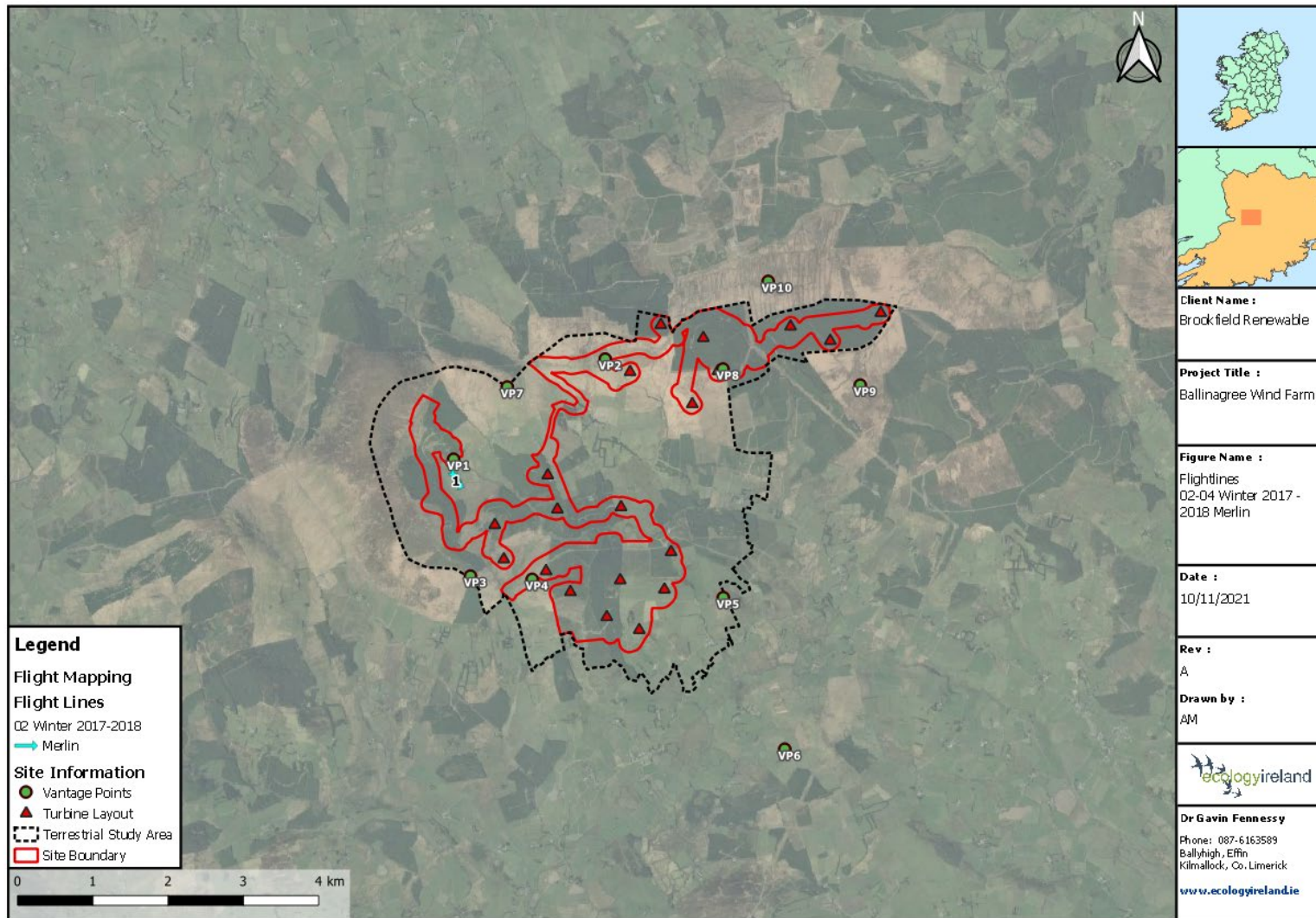


Figure 22 Winter 2018-2019 Golden Plover

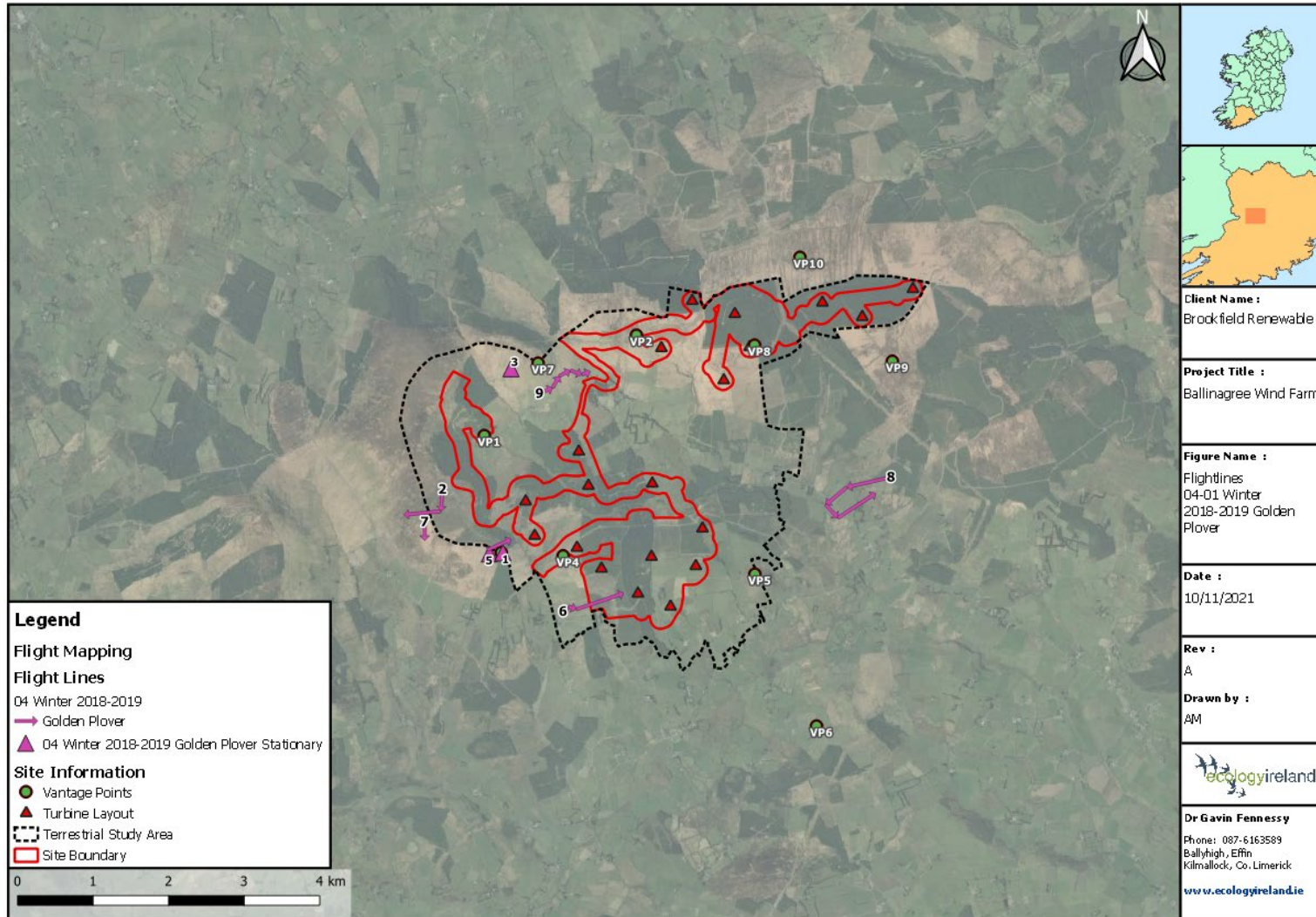


Figure 23 Winter 2018-2019 Hen Harrier

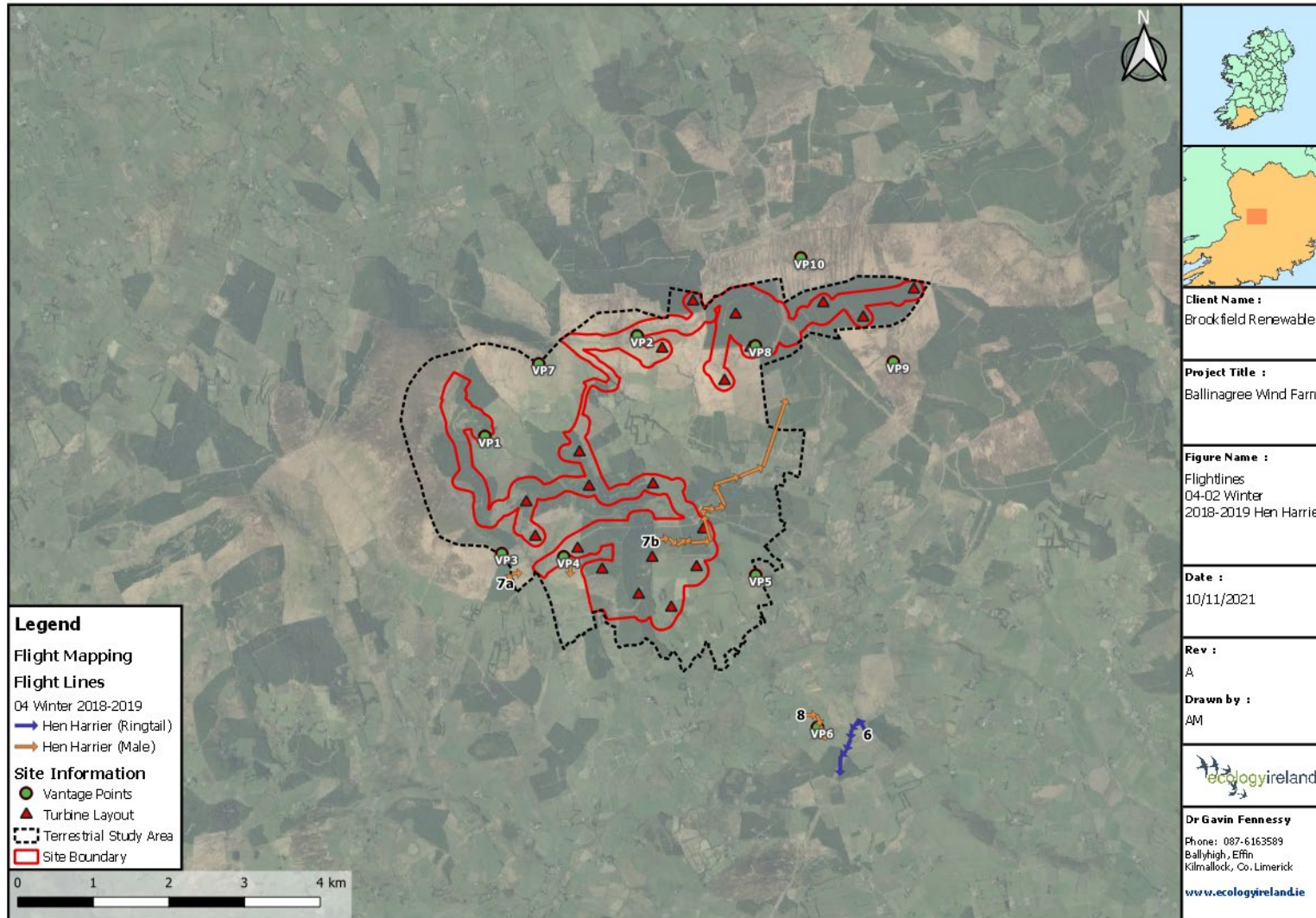


Figure 24 Winter 2018-2019 Peregrine

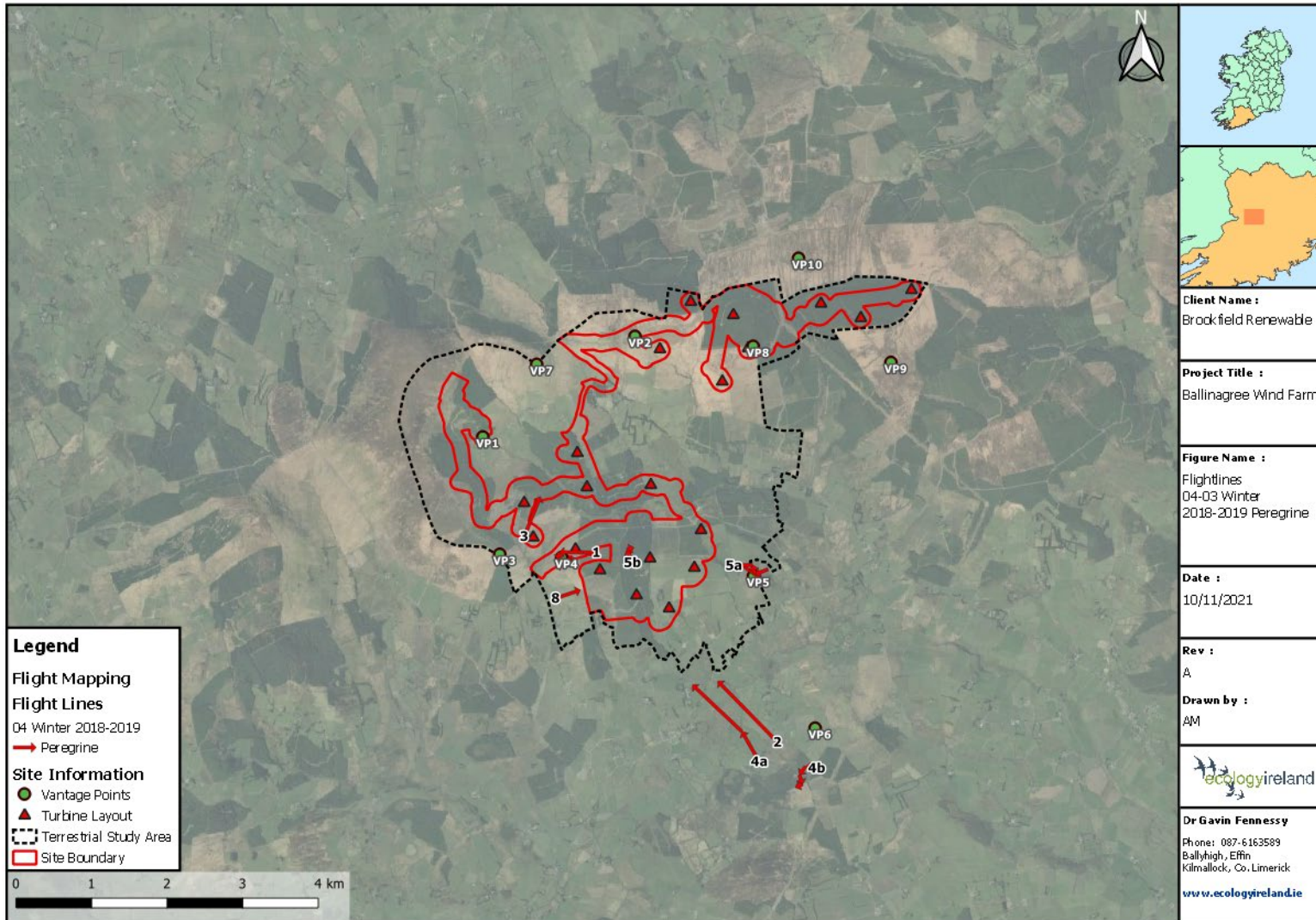


Figure 25 Winter 2018-2019 Merlin

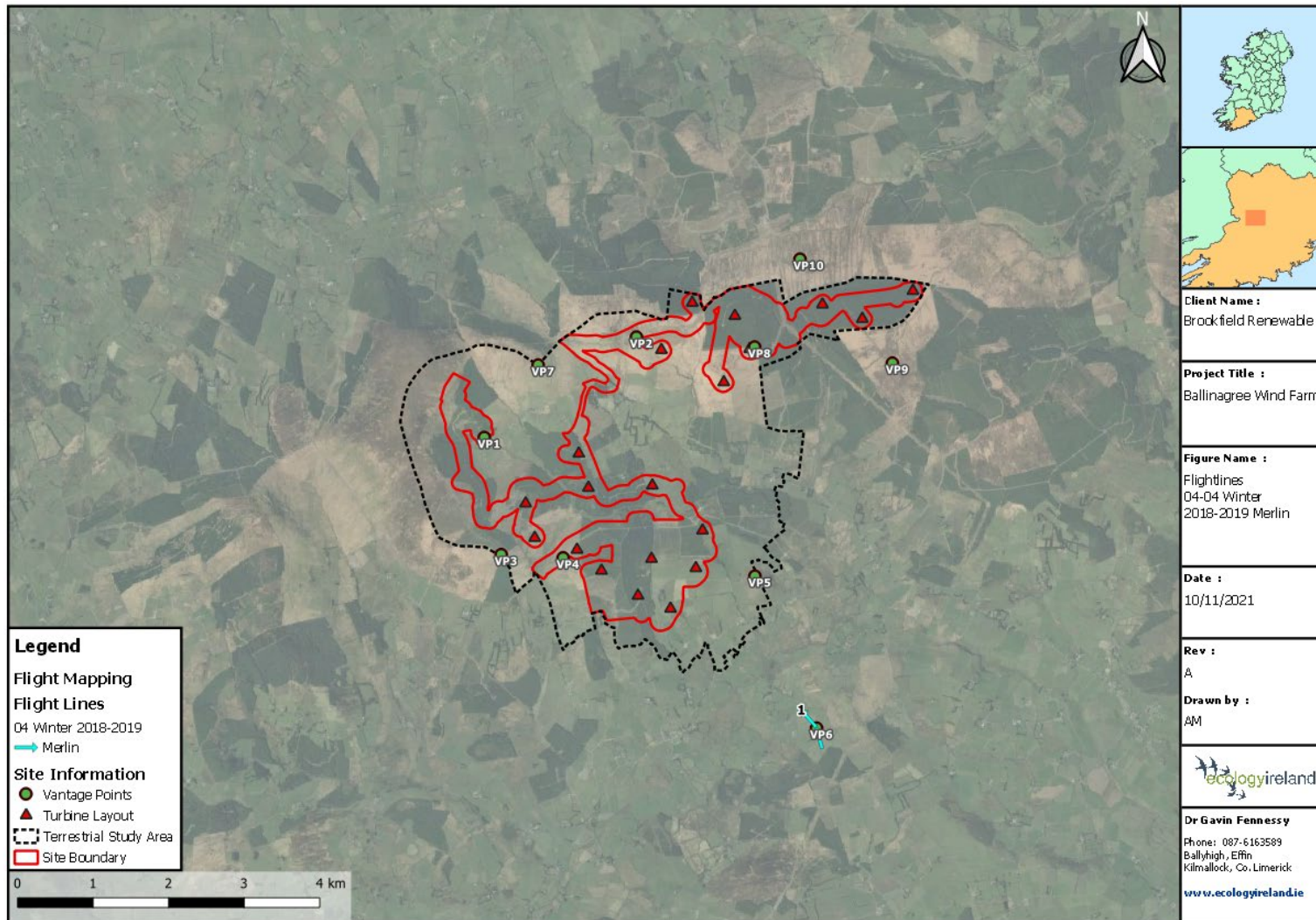


Figure 26 Winter 2018-2019 Hen Harrier Part 2

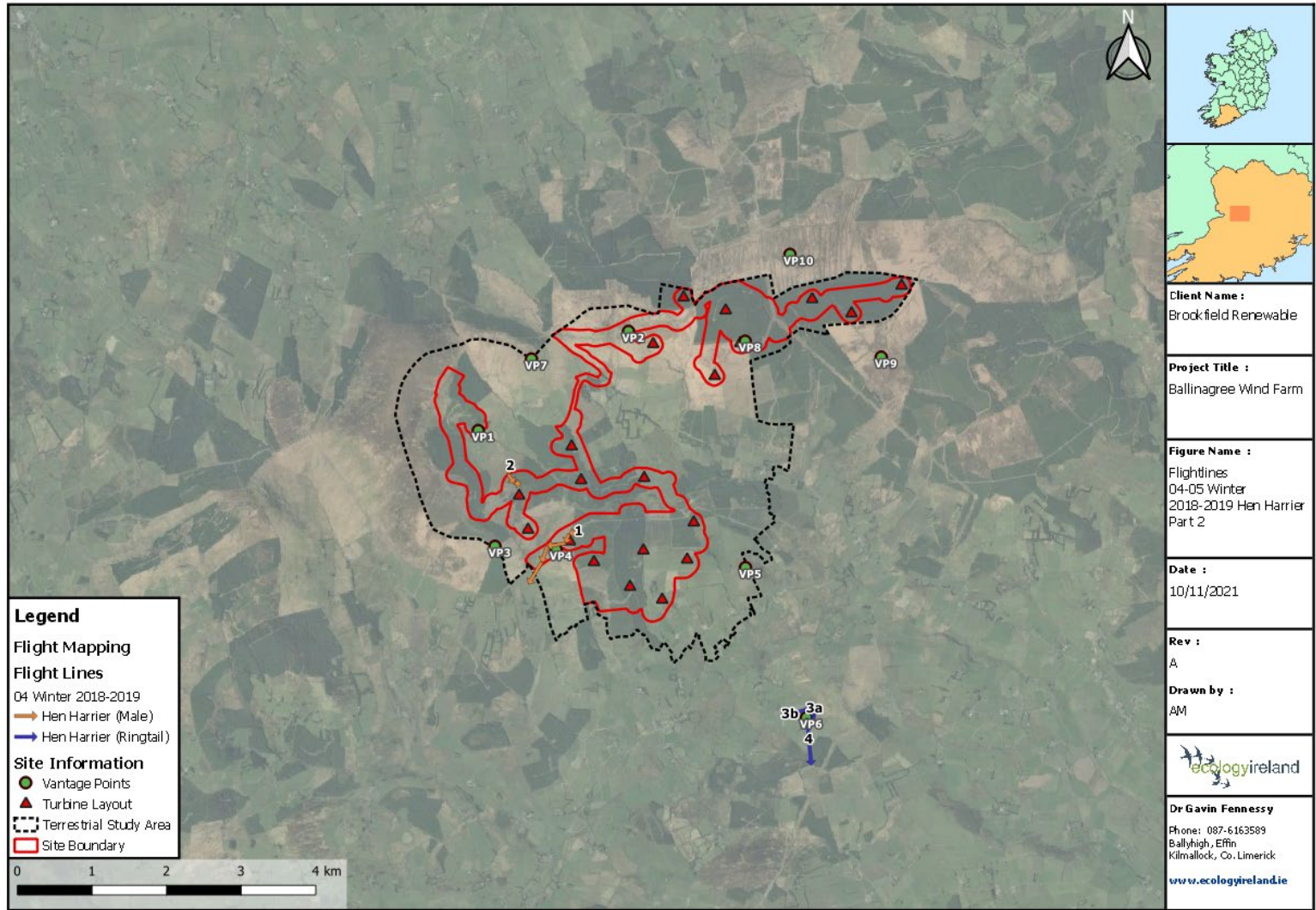


Figure 27 Winter 2019 – 2020 Golden Plover

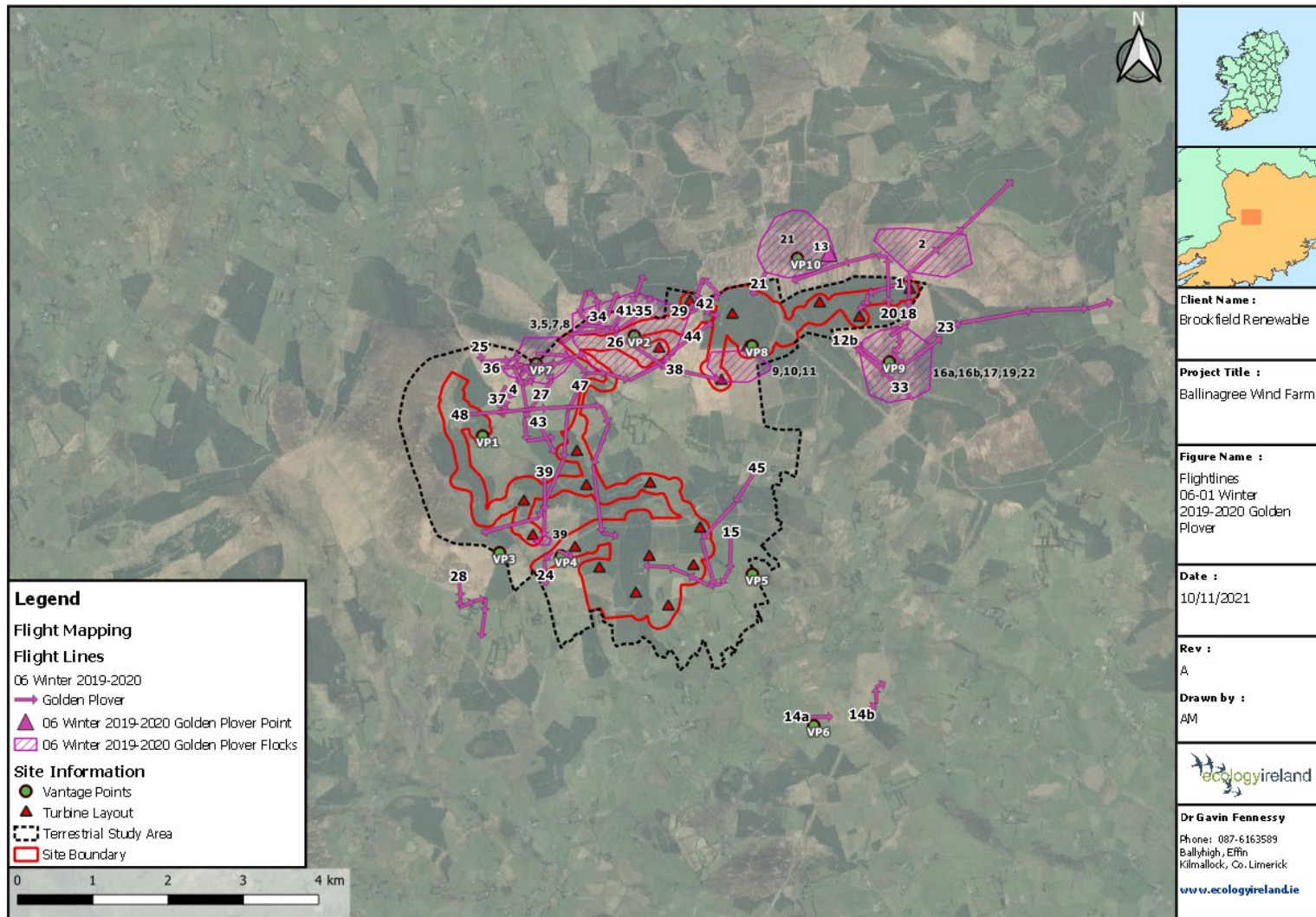


Figure 28 Winter 2019-2020 Hen Harrier

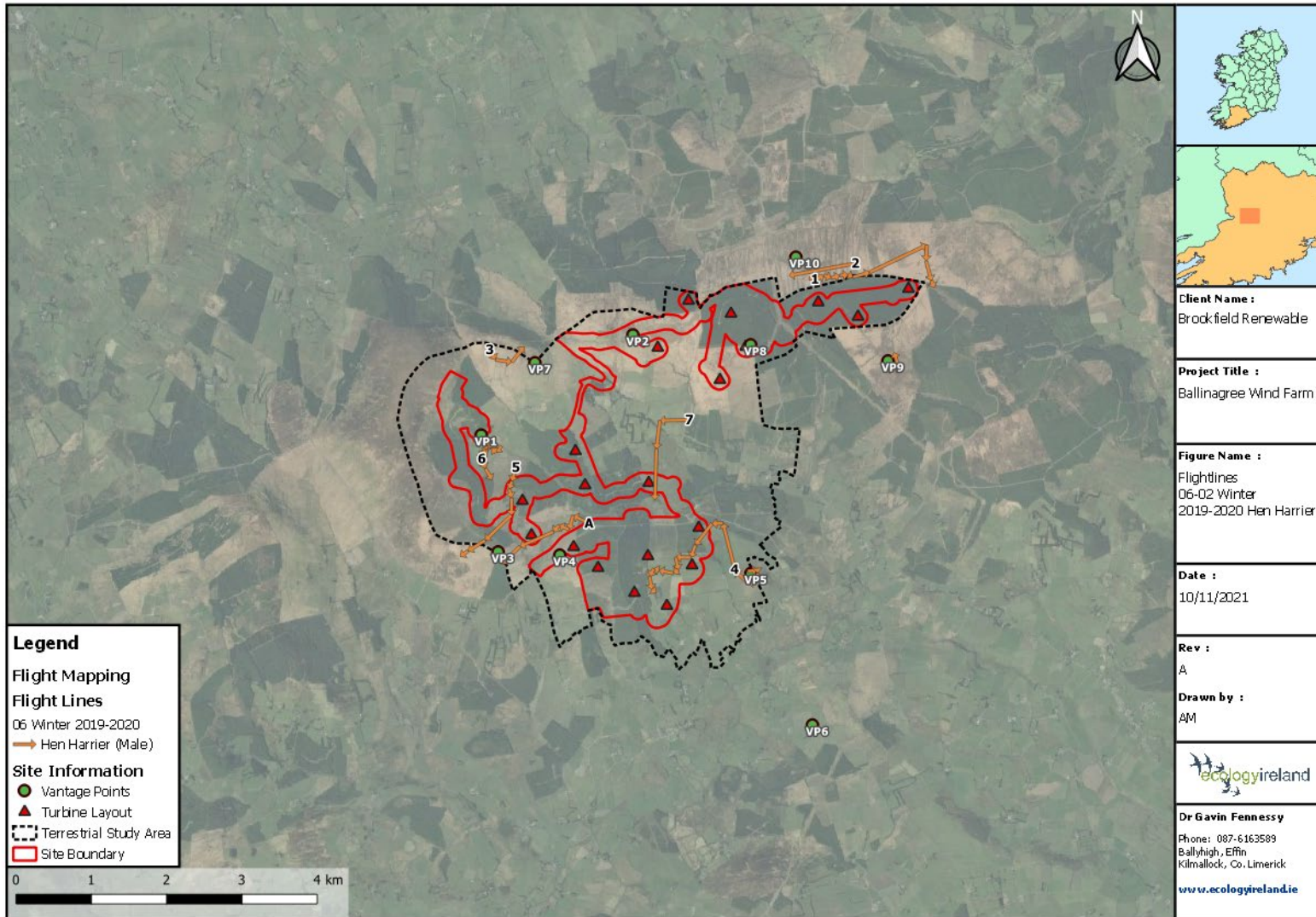


Figure 29 Winter 2019-2020 Peregrine

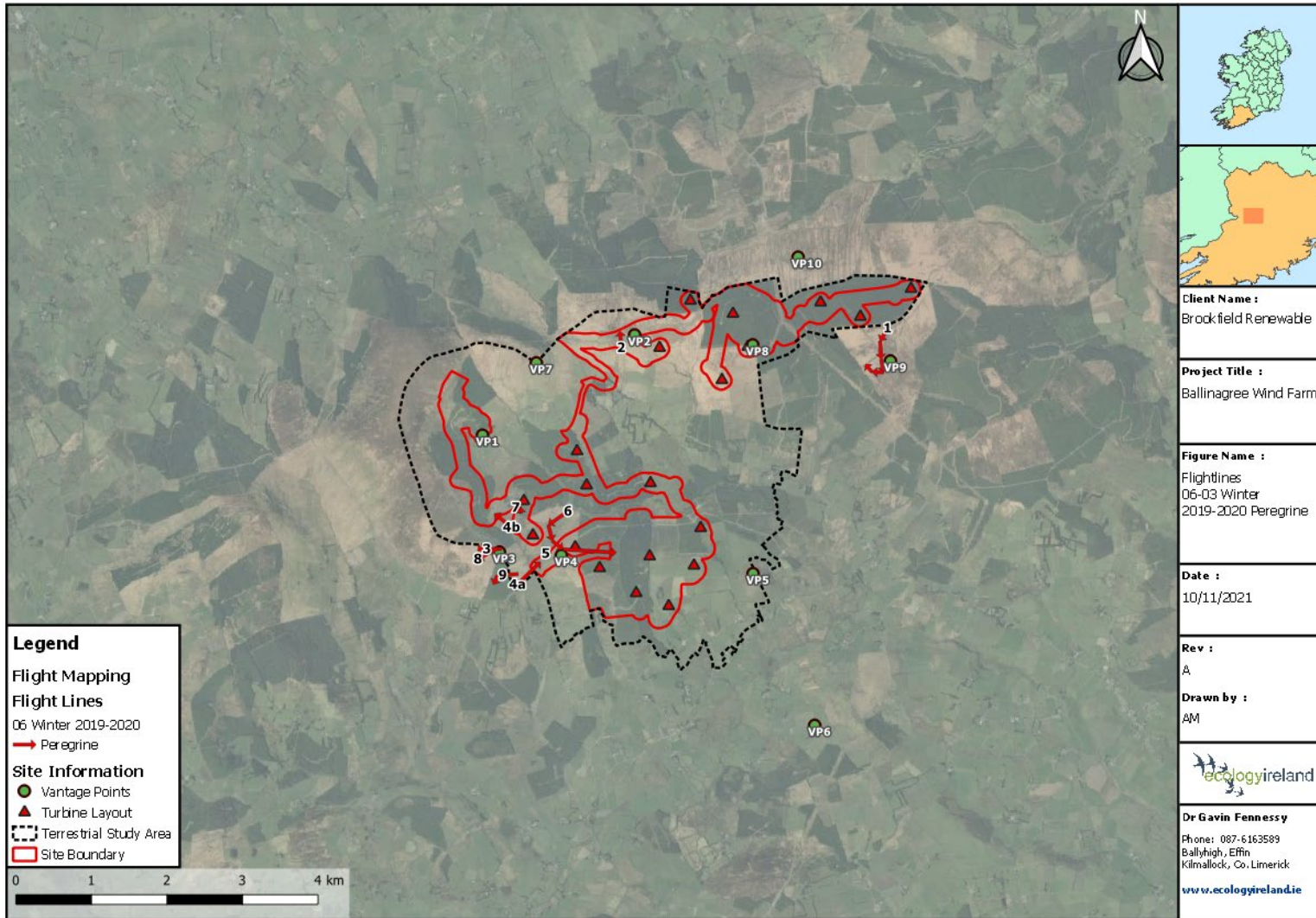


Figure 30 Winter 2019-2020 Merlin

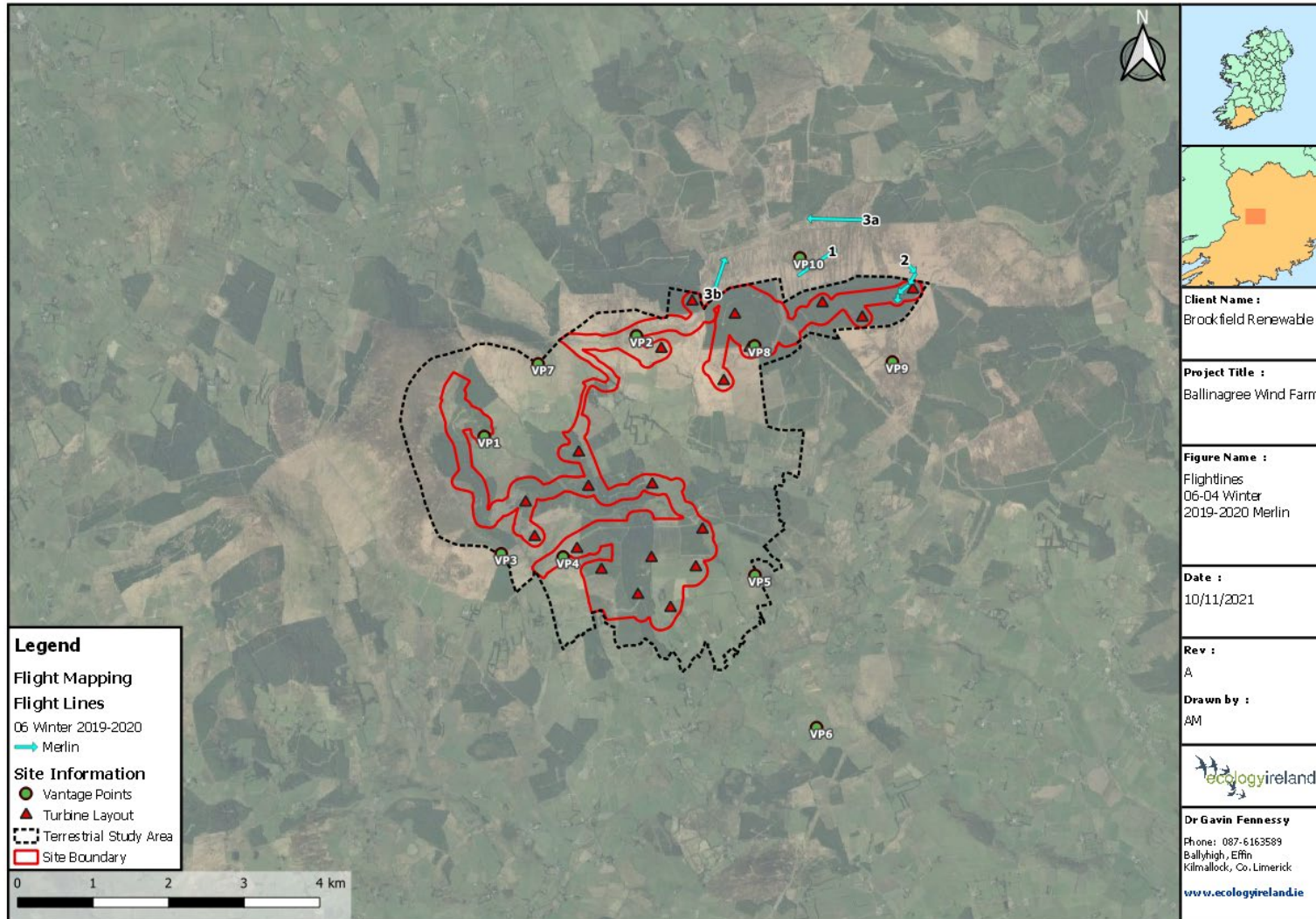


Figure 31 Winter 2019-2020 Golden Plover January

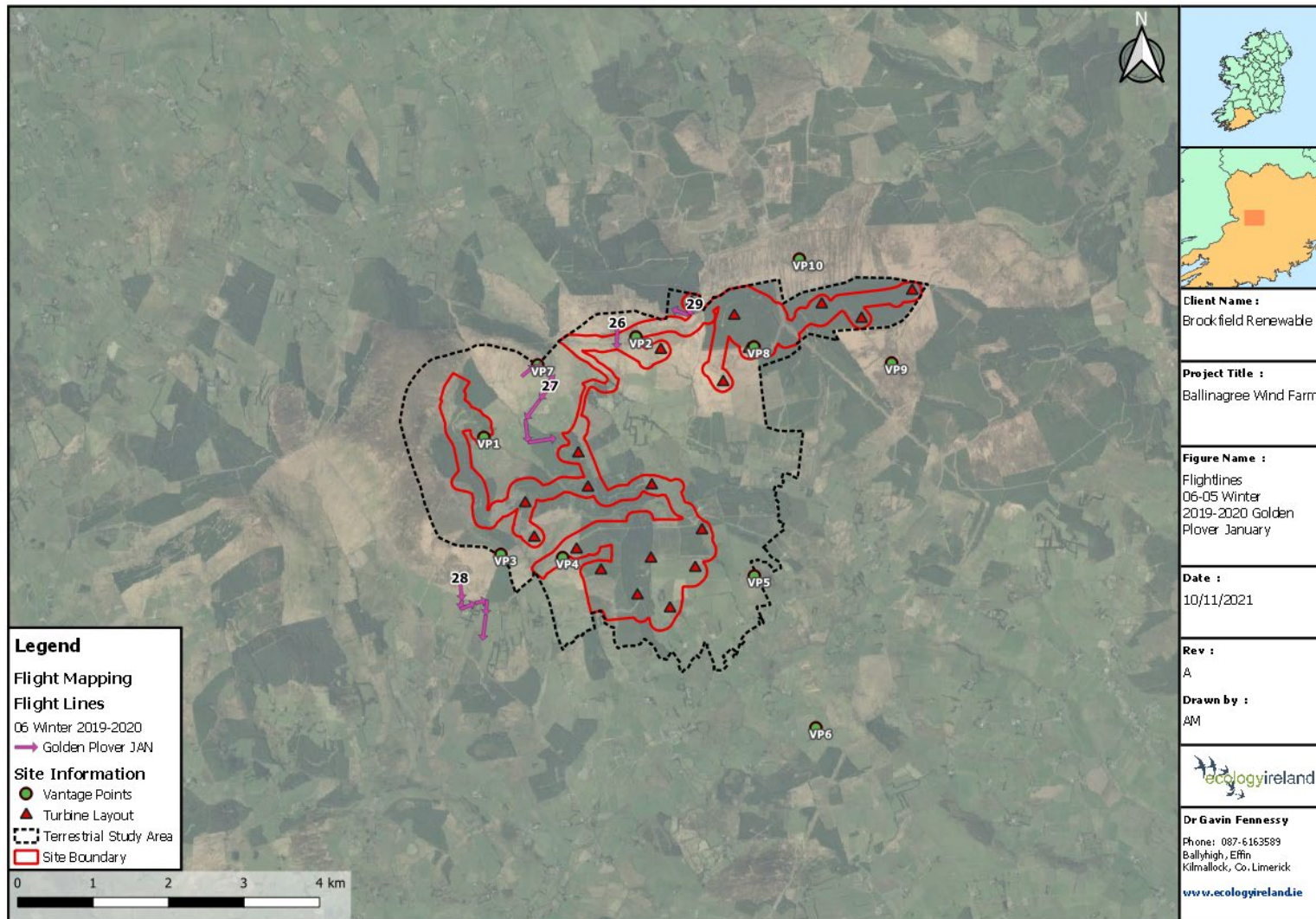


Figure 32 Winter 2019-2020 Golden Plover February

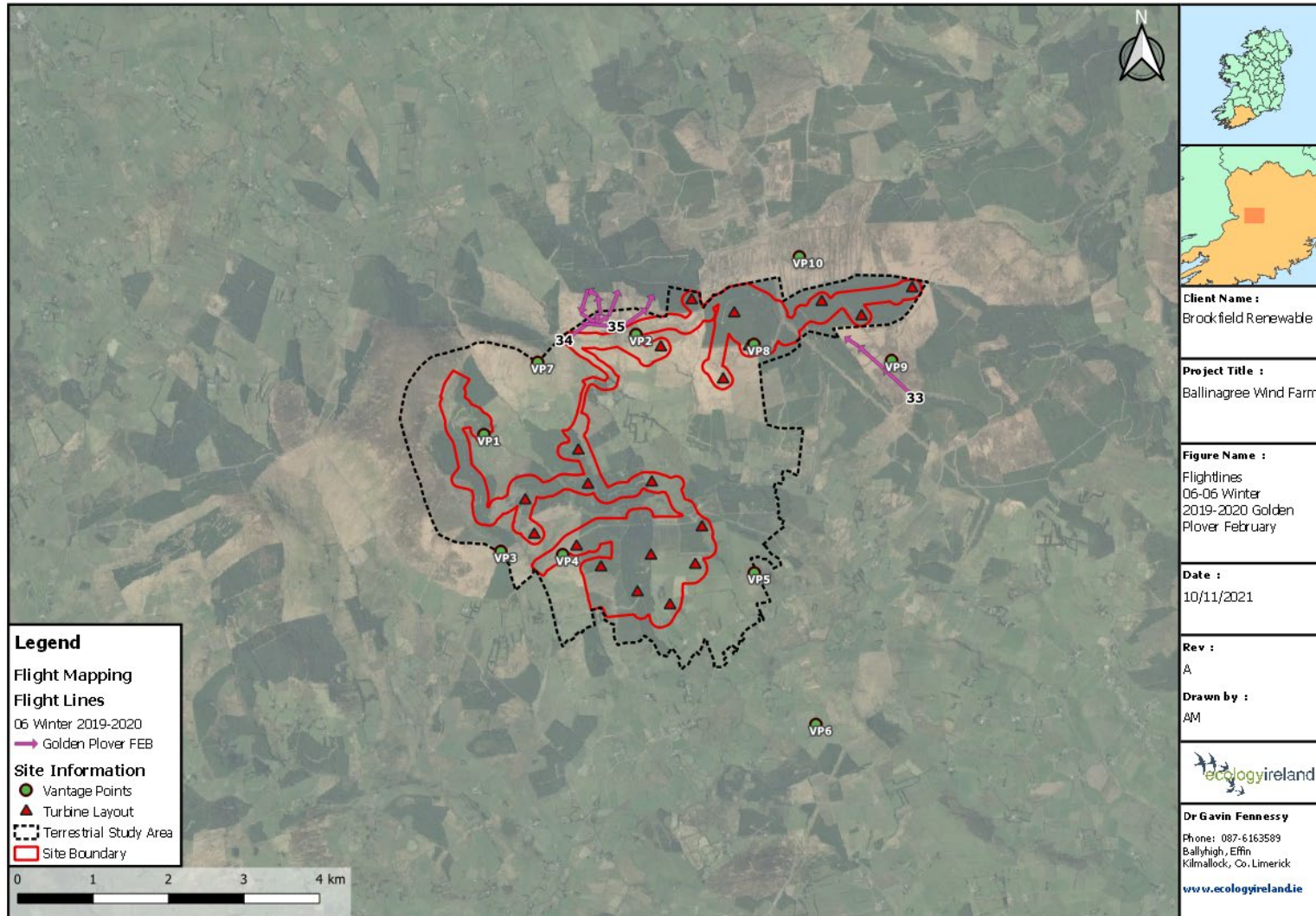


Figure 33 Winter 2019-2020 Golden Plover March

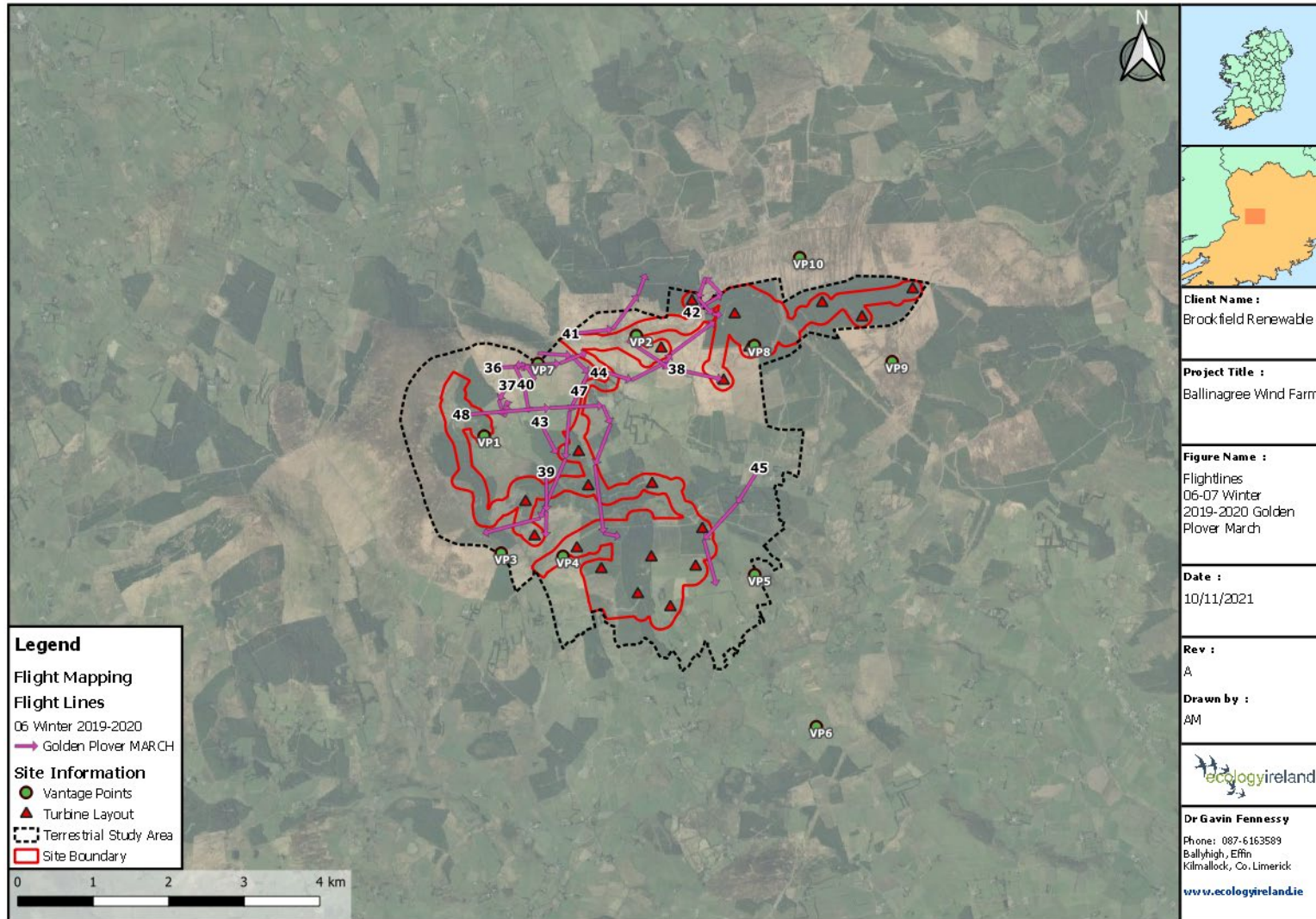


Figure 34 Winter 2019-2020 White Tailed Sea Eagle



Figure 35 Winter 2019-2020 Red Kite

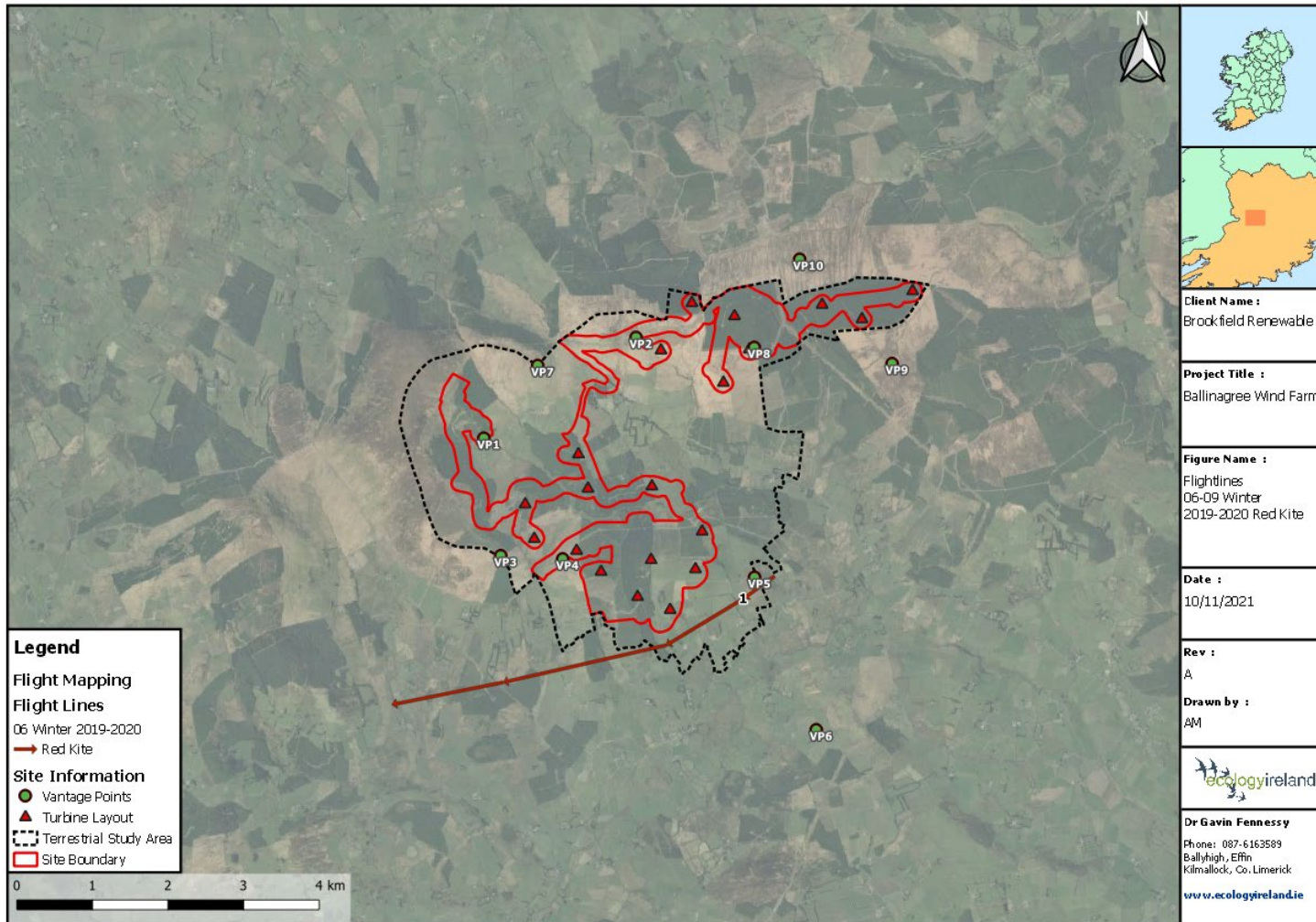


Figure 36 Winter 2019-2020 Red Grouse

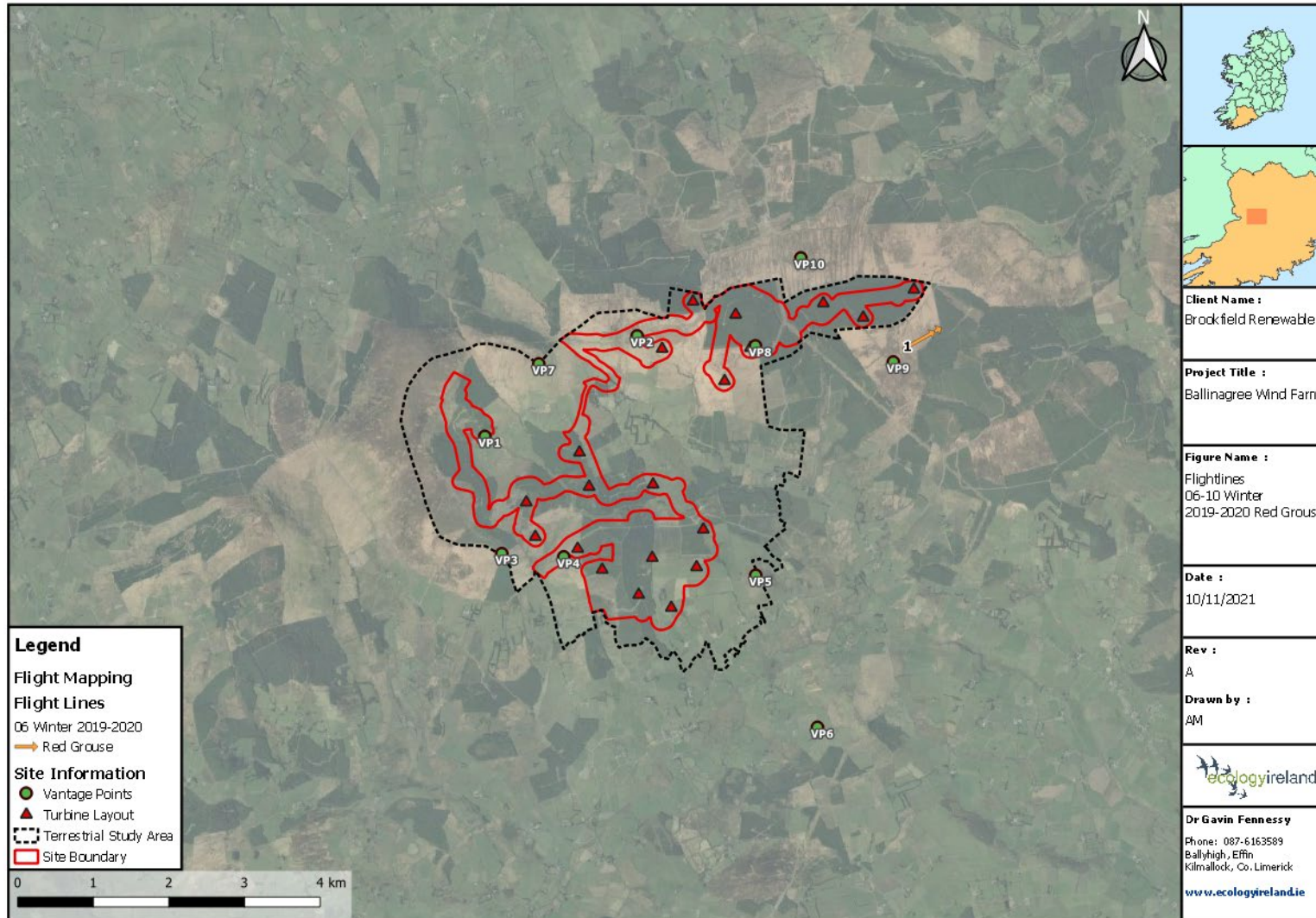


Figure 37 Winter 2020-2021 Golden Plover

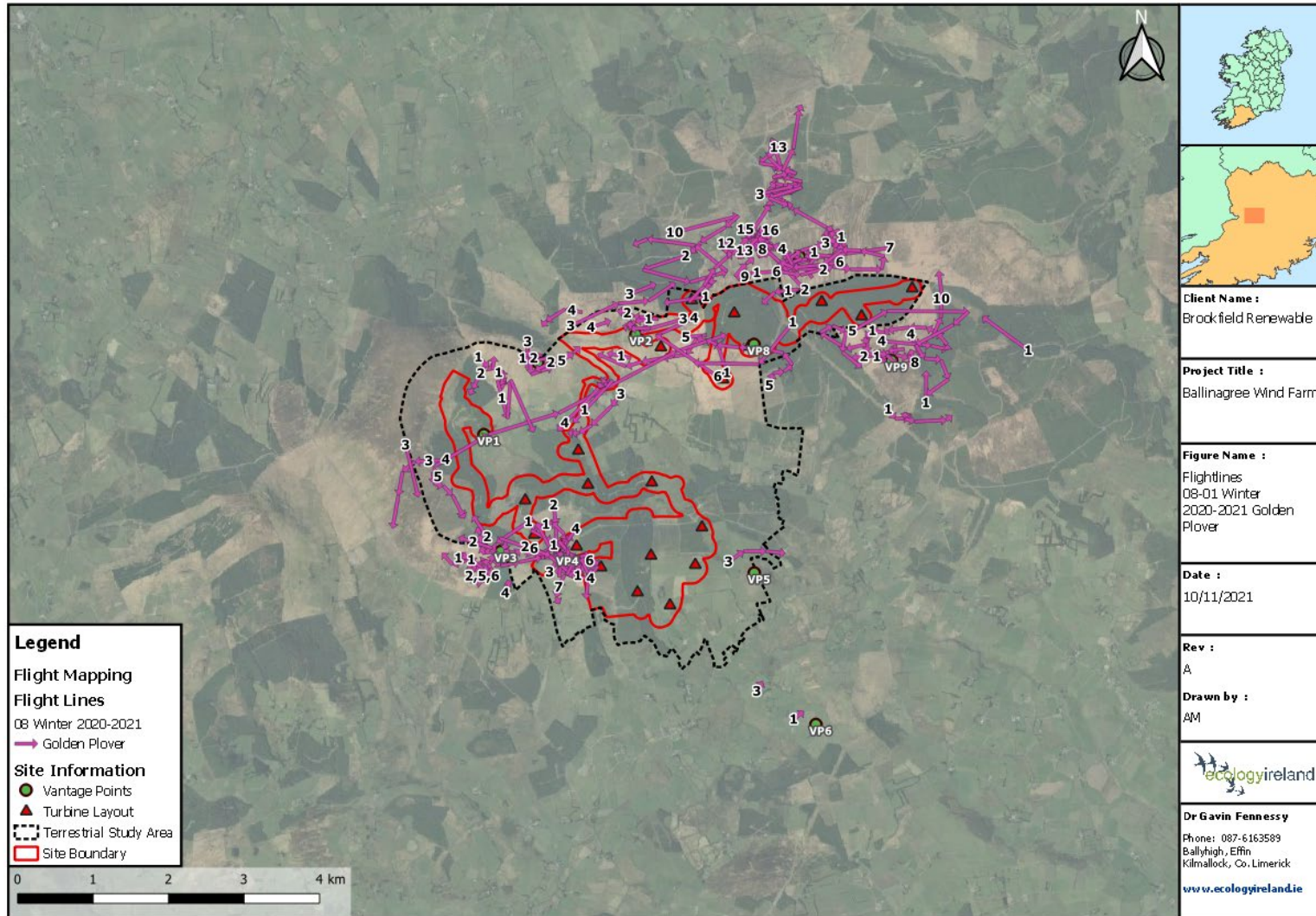


Figure 38 Winter 2020-2021 Golden Plover October

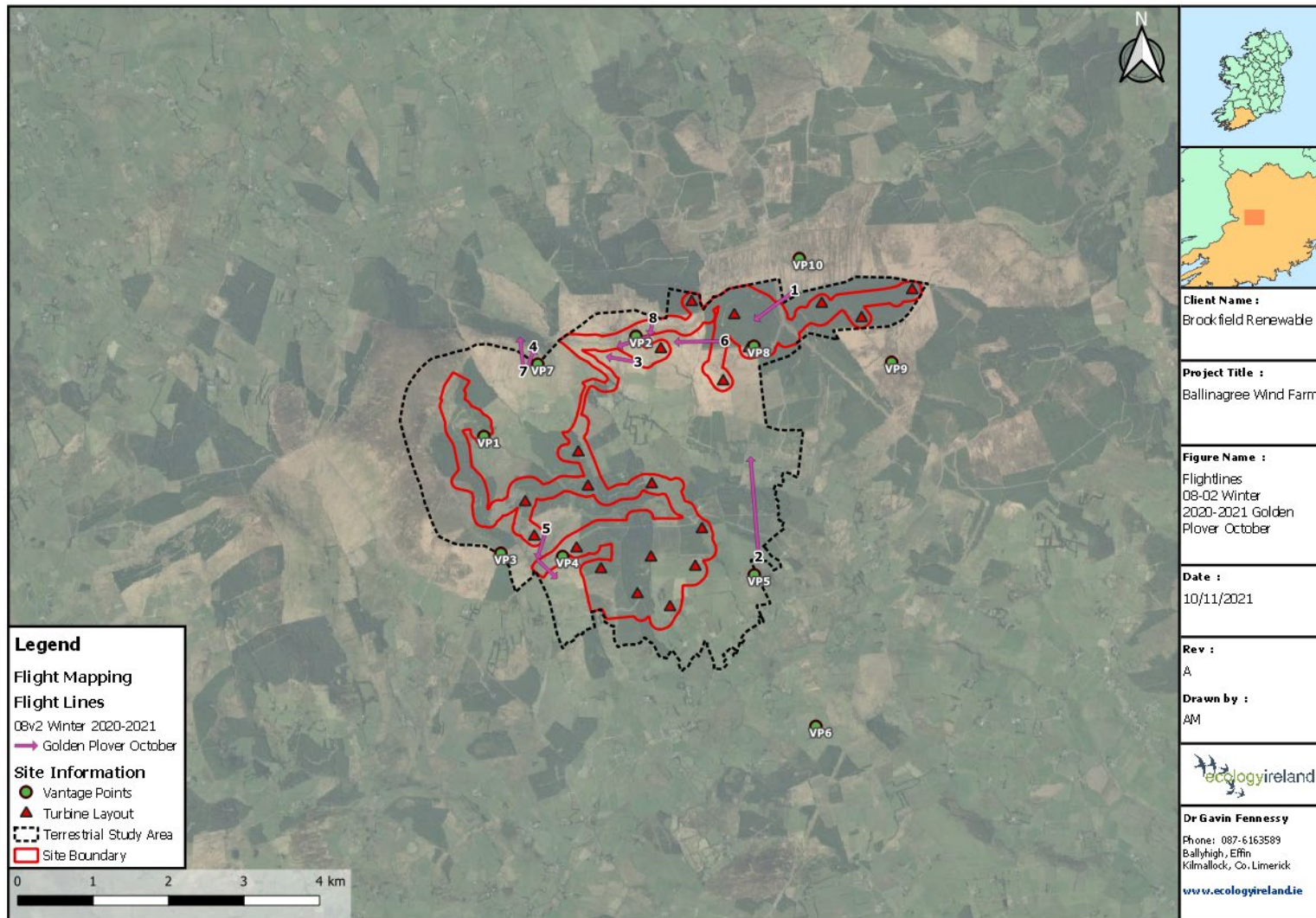


Figure 39 Winter 2020-2021 Golden Plover November

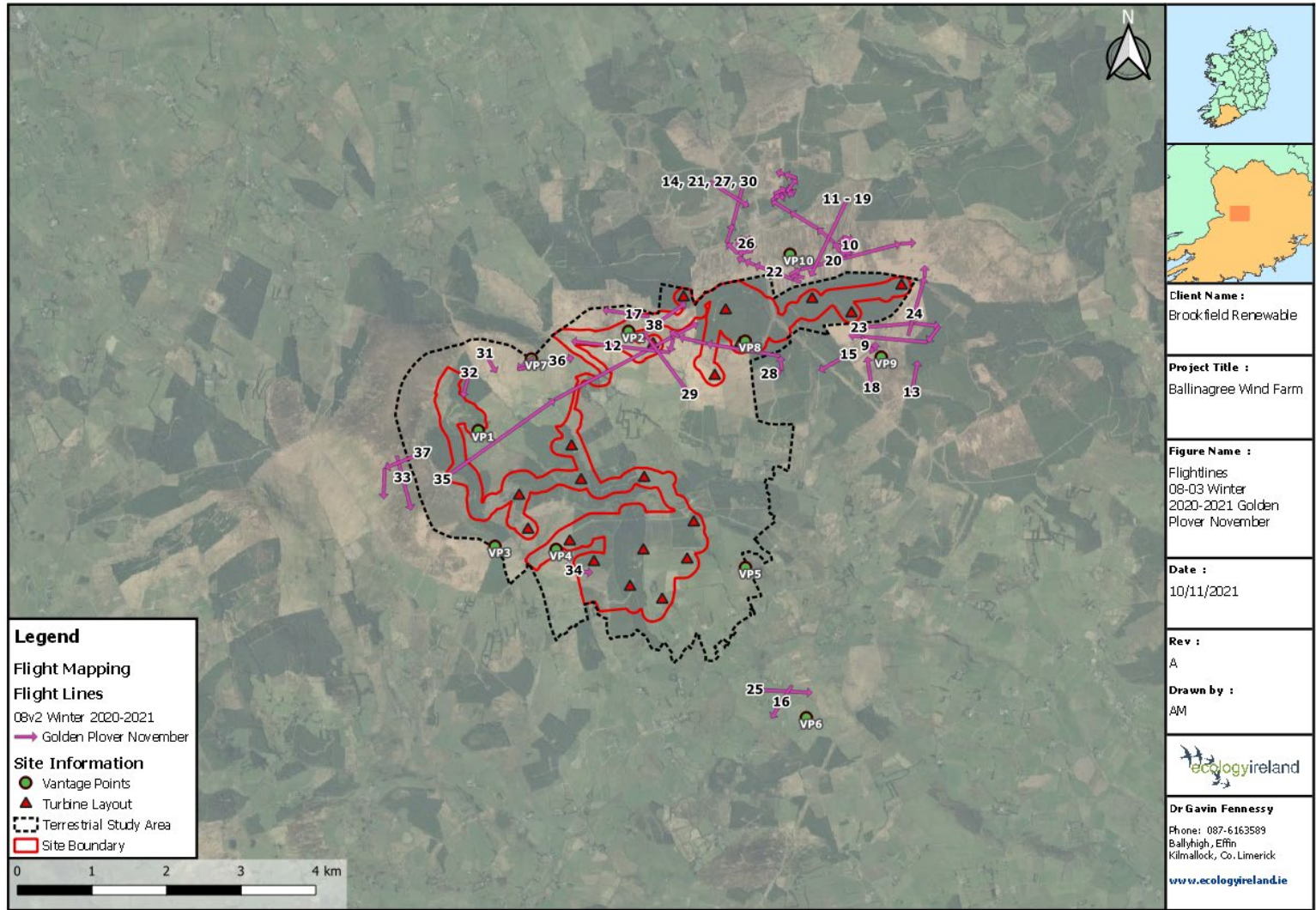
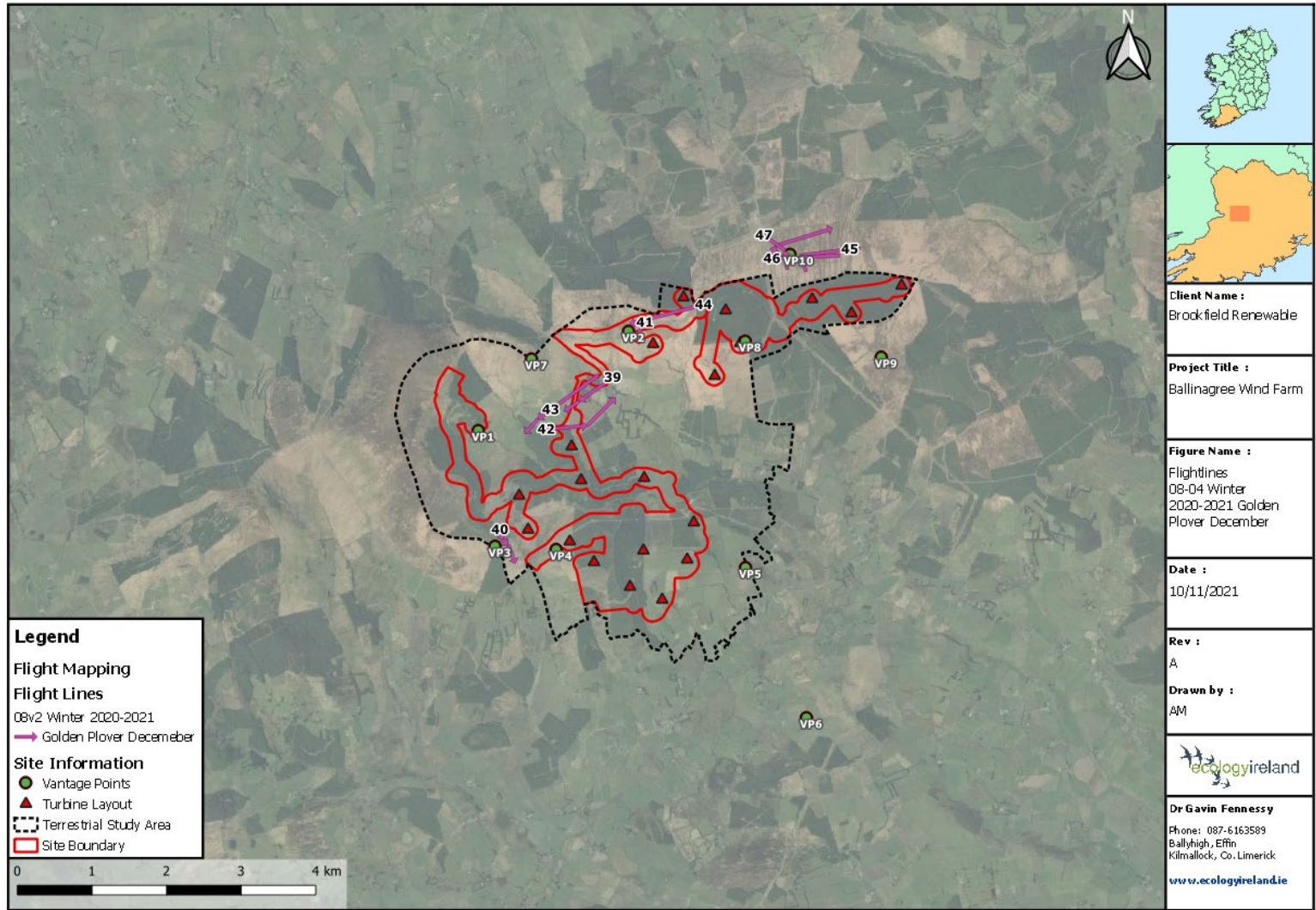


Figure 40 Winter 2020-2021 Golden Plover December



Client Name :
Brockfield Renewable

Project Title :
Ballinagree Wind Farm

Figure Name :
Flightlines
08-04 Winter
2020-2021 Golden
Plover December

Date :
10/11/2021

Rev :
A

Drawn by :
AM

Dr Gavin Fennessy
Phone: 087-6163589
Ballyhigh, Effin
Kilmallock, Co. Limerick
www.ecologyireland.ie

Legend

Flight Mapping
Flight Lines
08v2 Winter 2020-2021
→ Golden Plover December

Site Information
● Vantage Points
▲ Turbine Layout
--- Terrestrial Study Area
□ Site Boundary

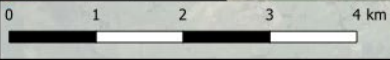


Figure 41 Winter 2020-2021 Golden Plover January

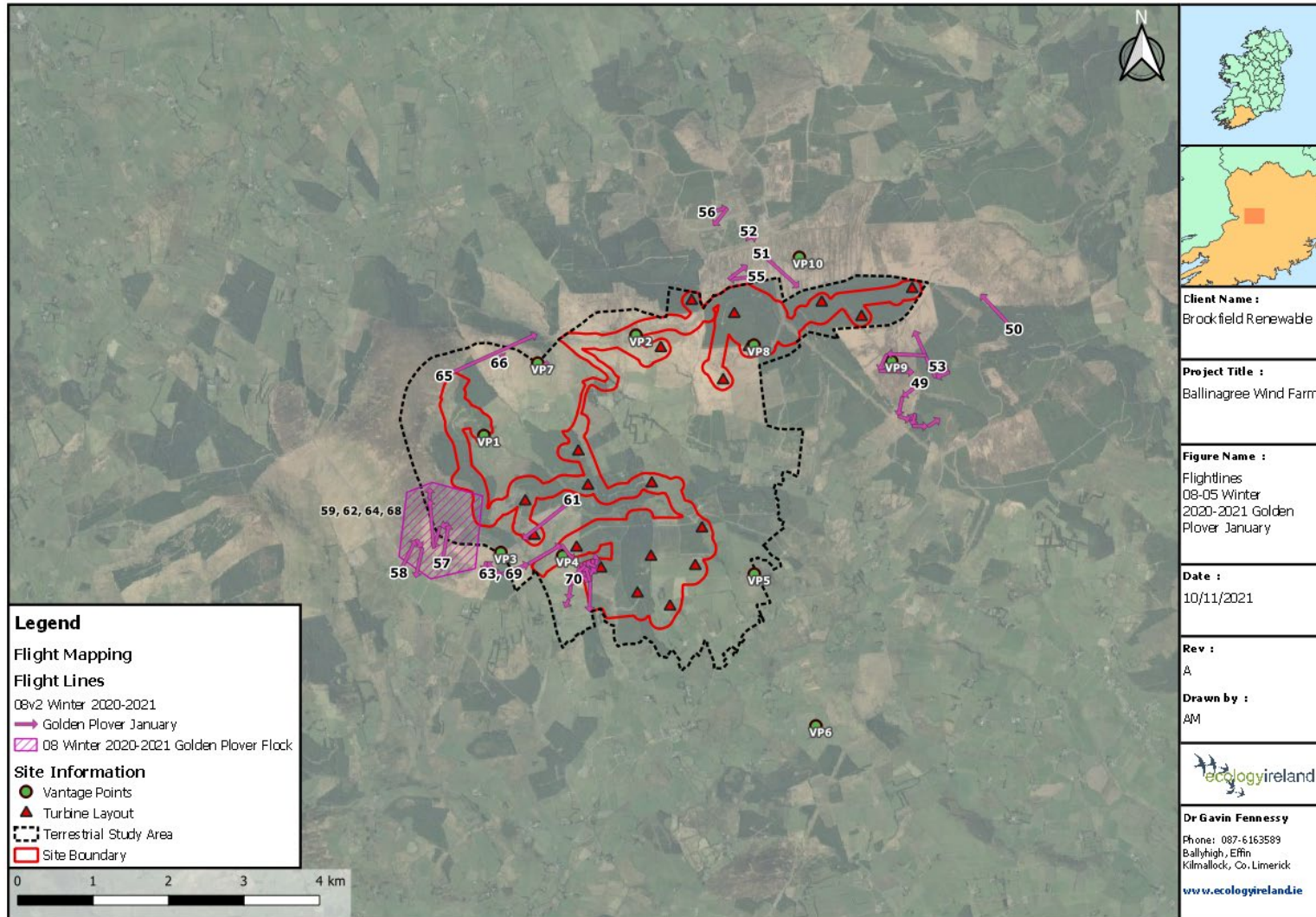


Figure 42 Winter 2020-2021 Golden Plover February

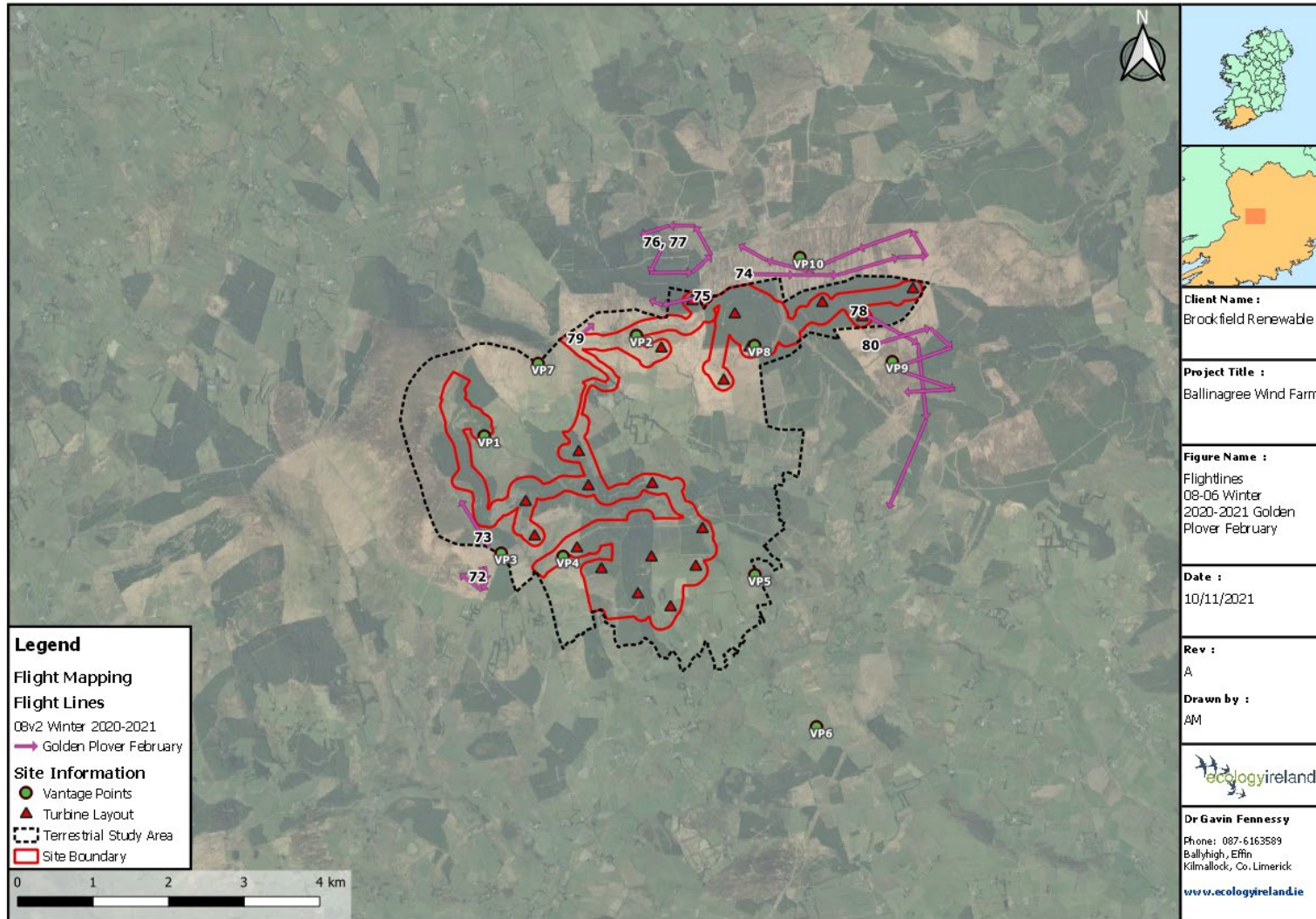


Figure 43 Winter 2020-2021 Hen Harrier

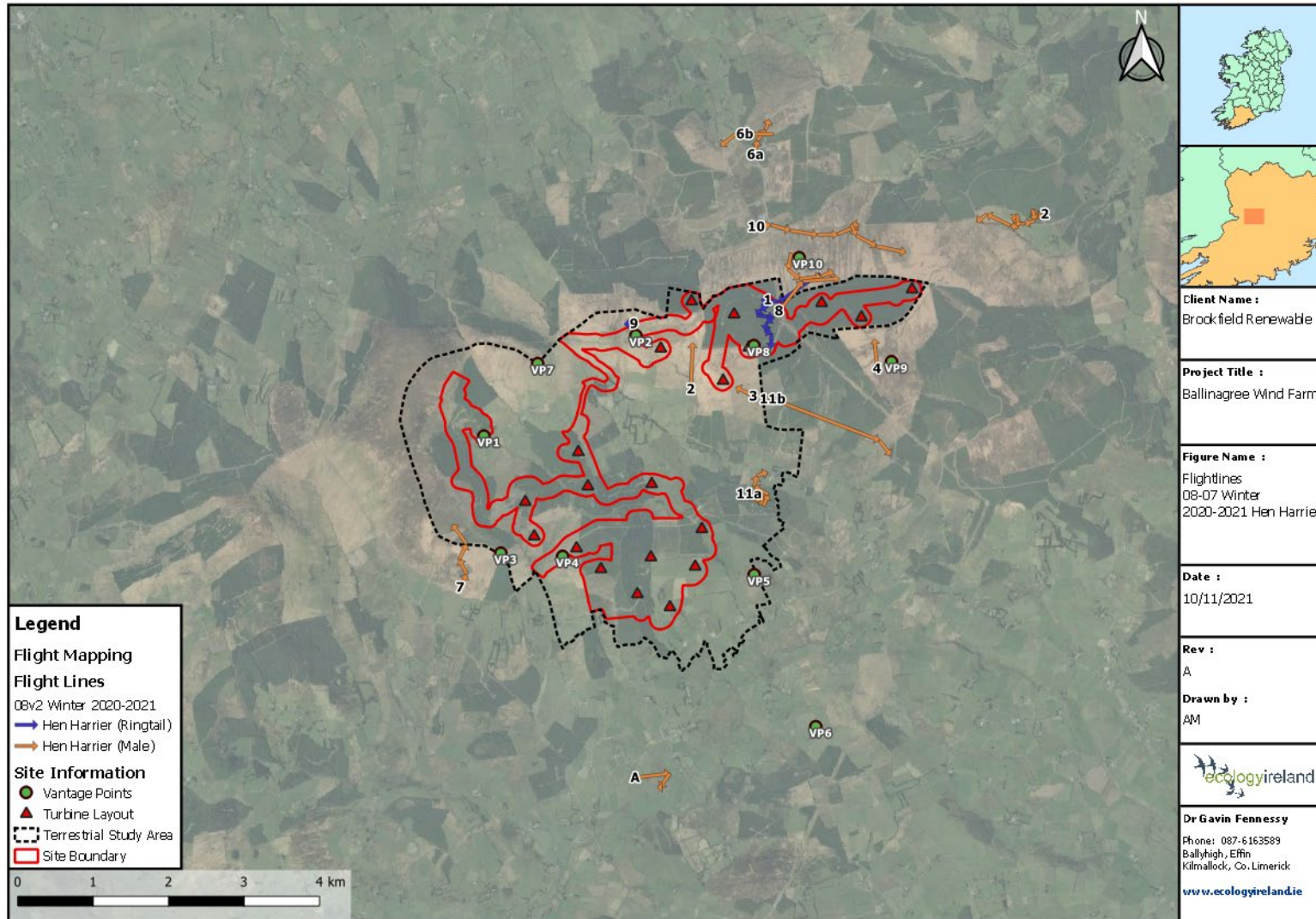


Figure 44 Winter 2020-2021 Peregrine

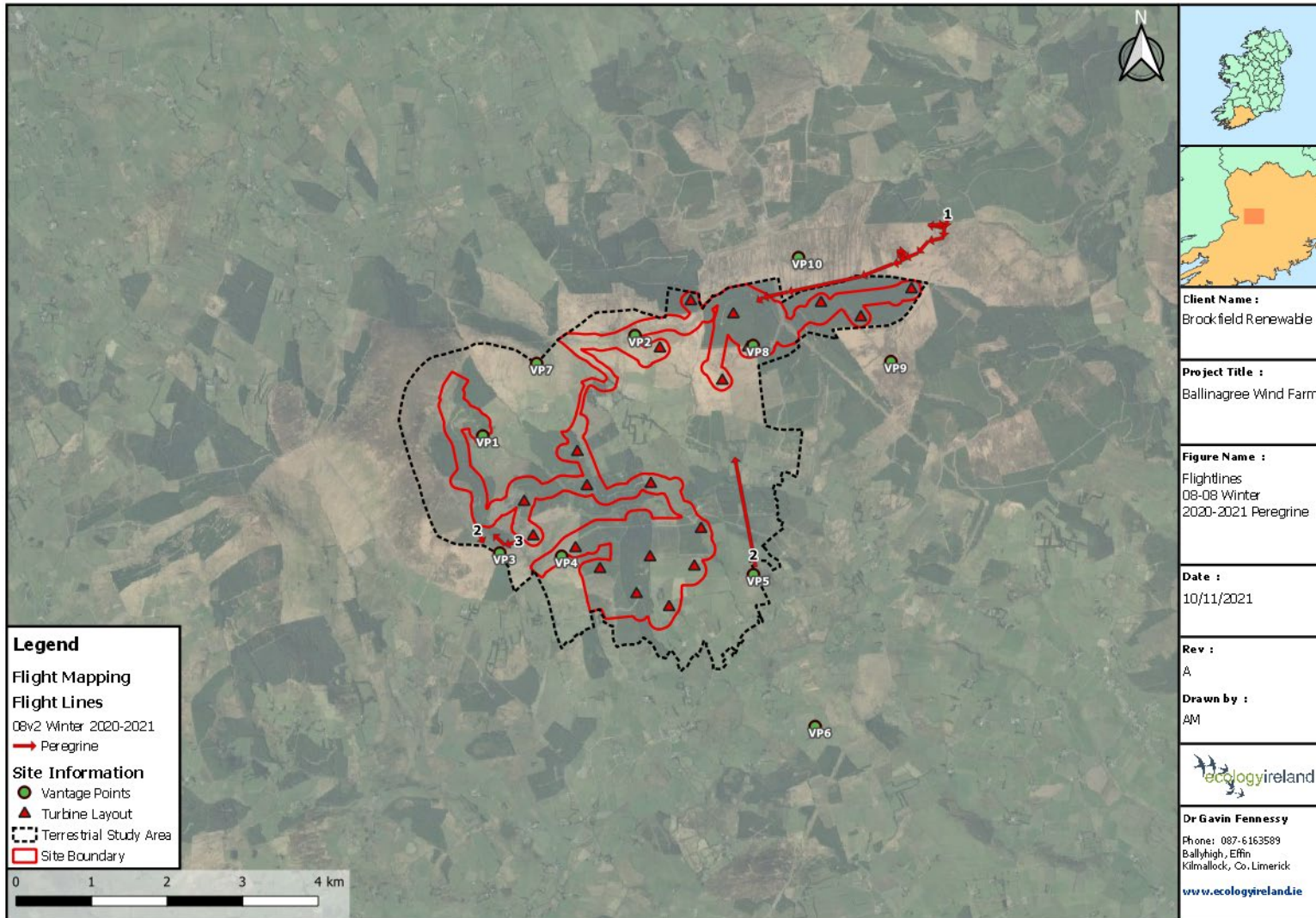


Figure 45 Winter 2020-2021 Merlin

